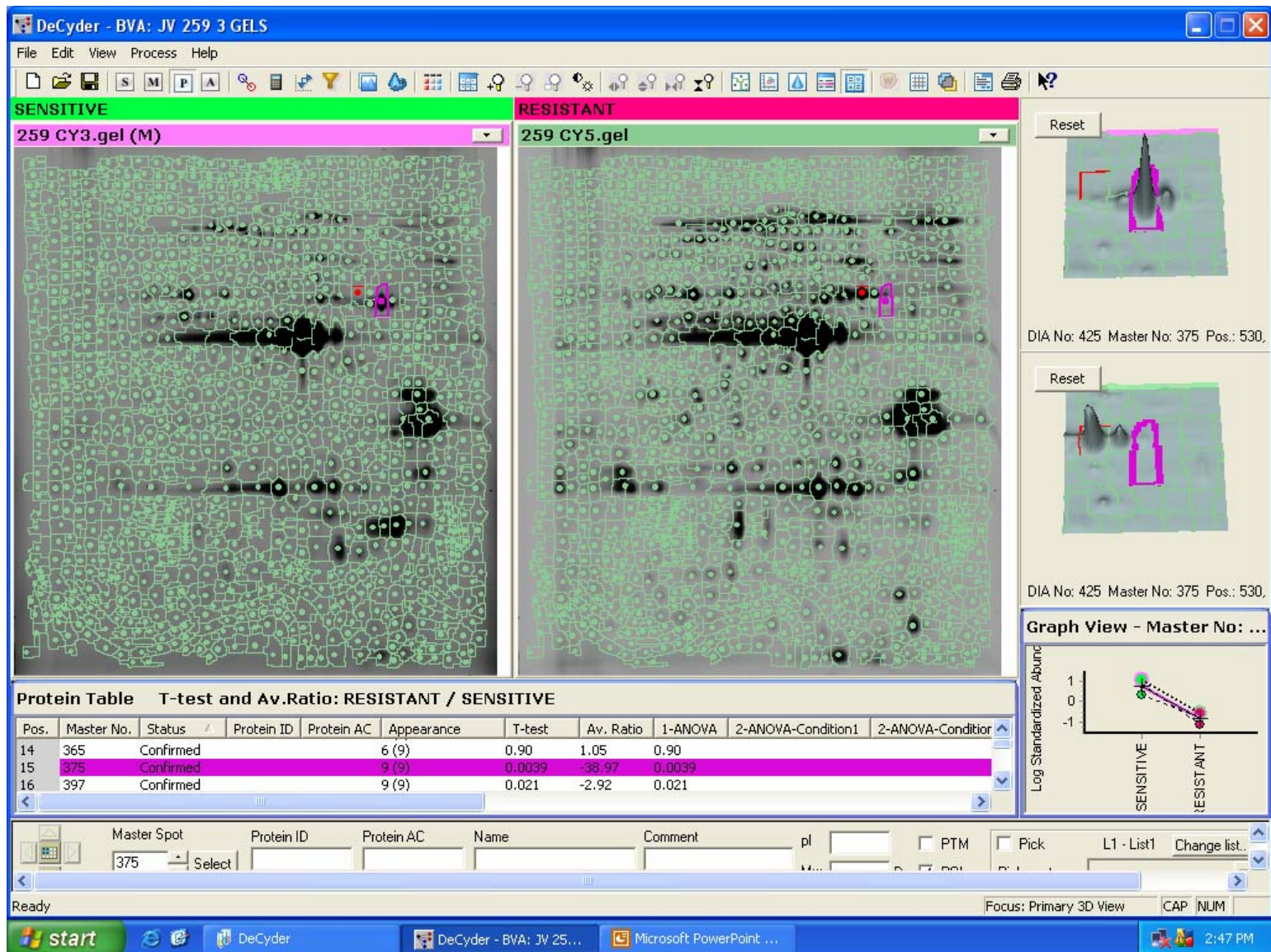
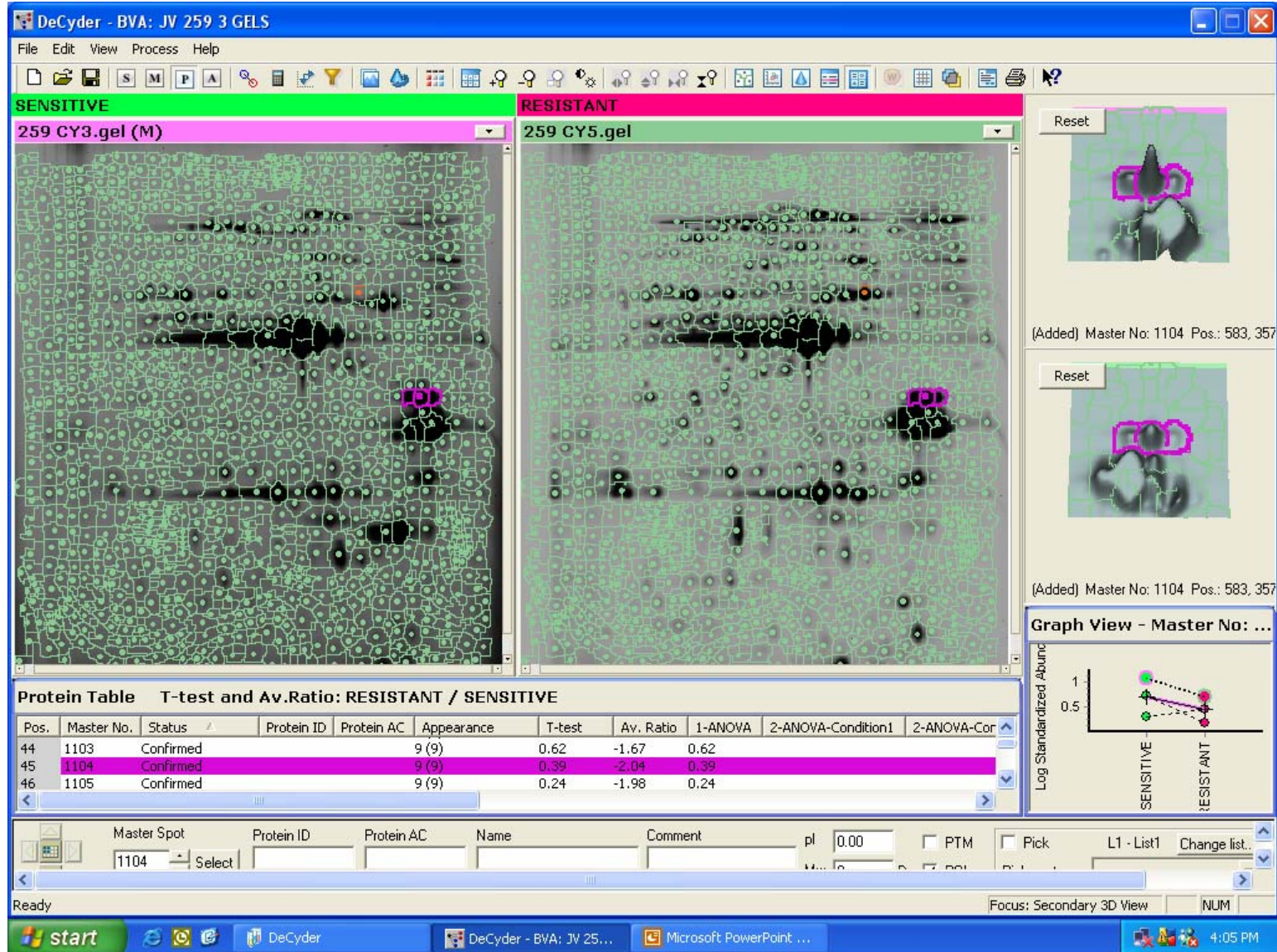


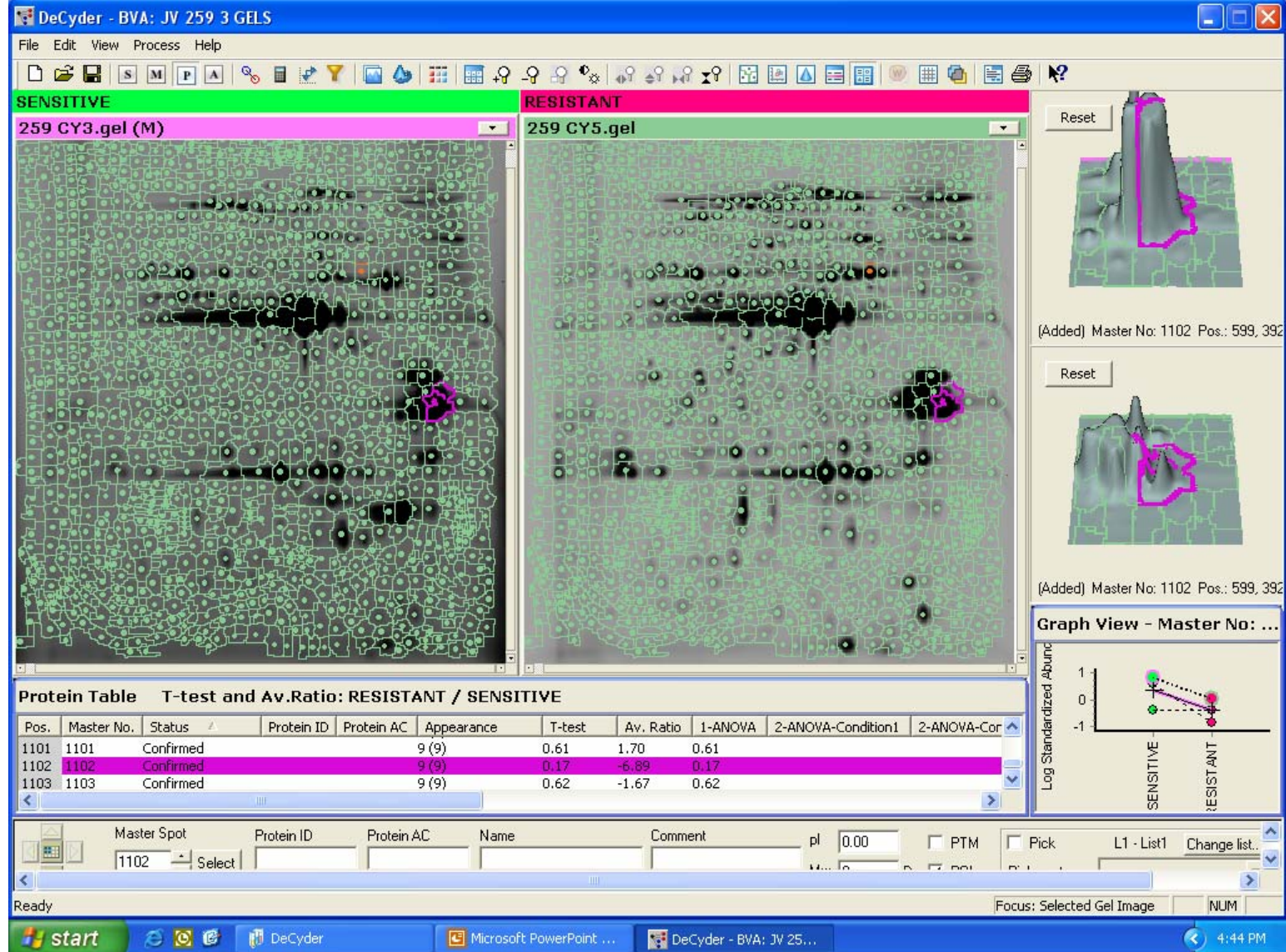
Representation of comparative DeCyder gel analysis of normalized gel image of native strain ATCC (primary image Cy 3 coupled) with Intermediate strain (RS 259) (Secondary image coupled with Cy 5) using BVA module. All the combined results are displayed for **spot I**. **Panel A** shows the spot I in both the compared strains. **Panel B** represent graphical analysis for all three independent experiments, **Panel C** mean value of 3D expression of spot I in both the strains and **Panel D** shows statistical measurement.



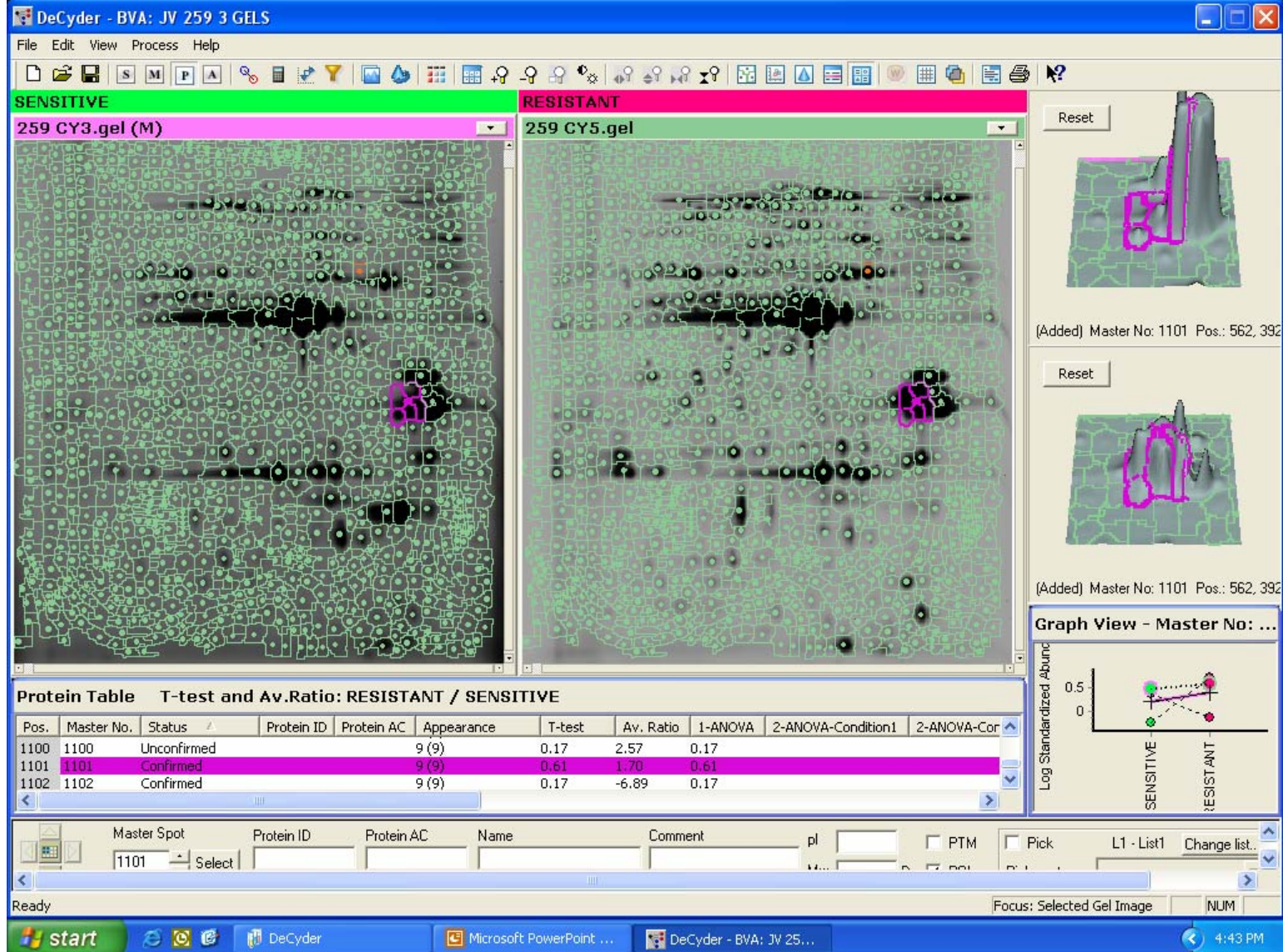
Representation of comparative DeCyder gel analysis of normalized gel image of native strain ATCC (primary image Cy 3 coupled) with Intermediate strain (RS 259) (Secondary image coupled with Cy 5) using BVA module. All the combined results are displayed for **spot II**. **Panel A** shows the spot II in both the compared strains. **Panel B** represent graphical analysis for all three independent experiments, **Panel C** mean value of 3D expression of spot II in both the strains and Pane **D** shows statistical measurement.



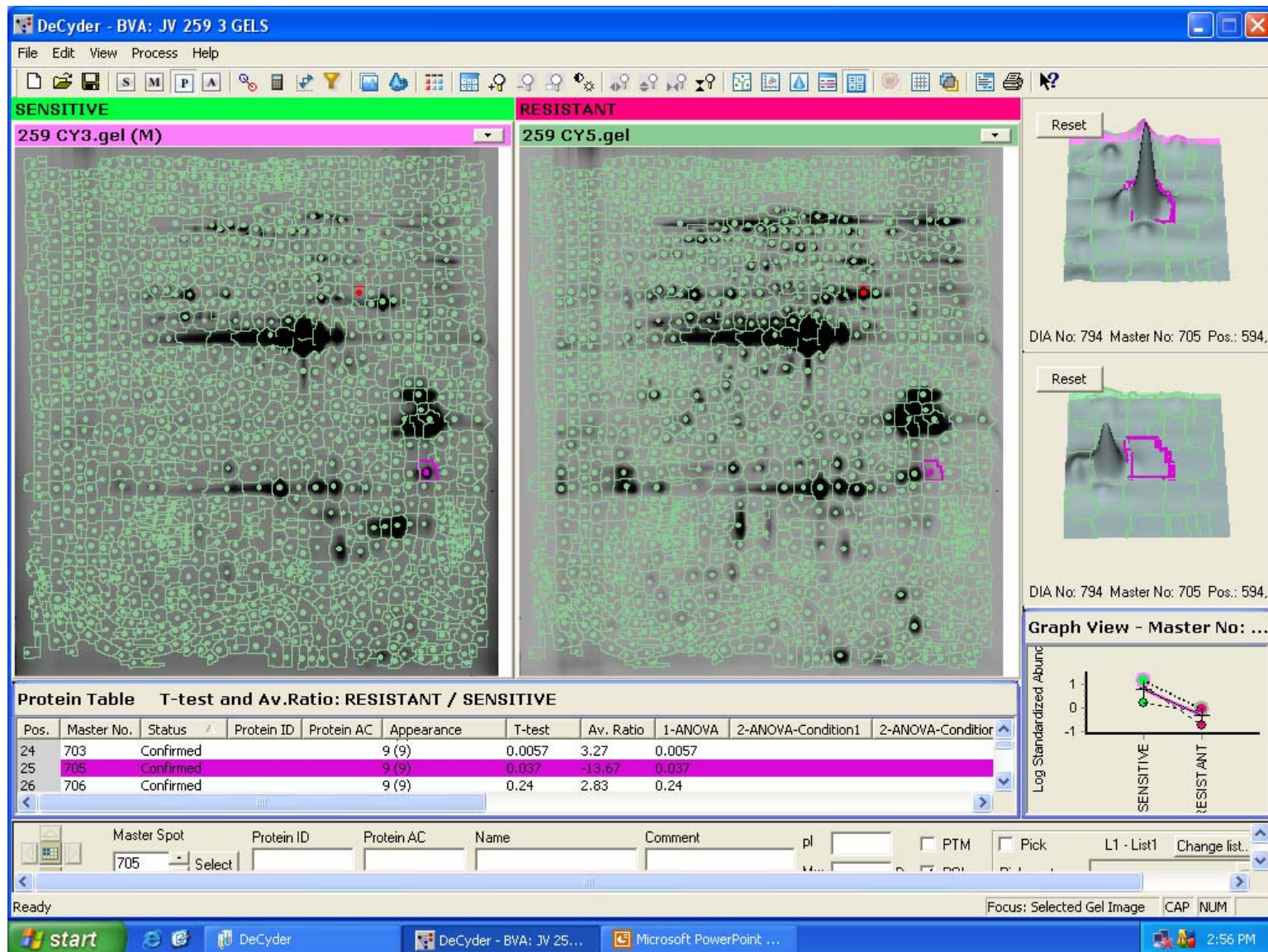
Representation of comparative DeCyder gel analysis of normalized gel image of native strain ATCC (primary image Cy 3 coupled) with Intermediate strain (RS 259) (Secondary image coupled with Cy 5) using BVA module. All the combined results are displayed for **spot III**. **Panel A** shows the spot III in both the compared strains. **Panel B** represent graphical analysis for all three independent experiments, **Panel C** mean value of 3D expression of spot III in both the strains and **Panel D** shows statistical measurement.



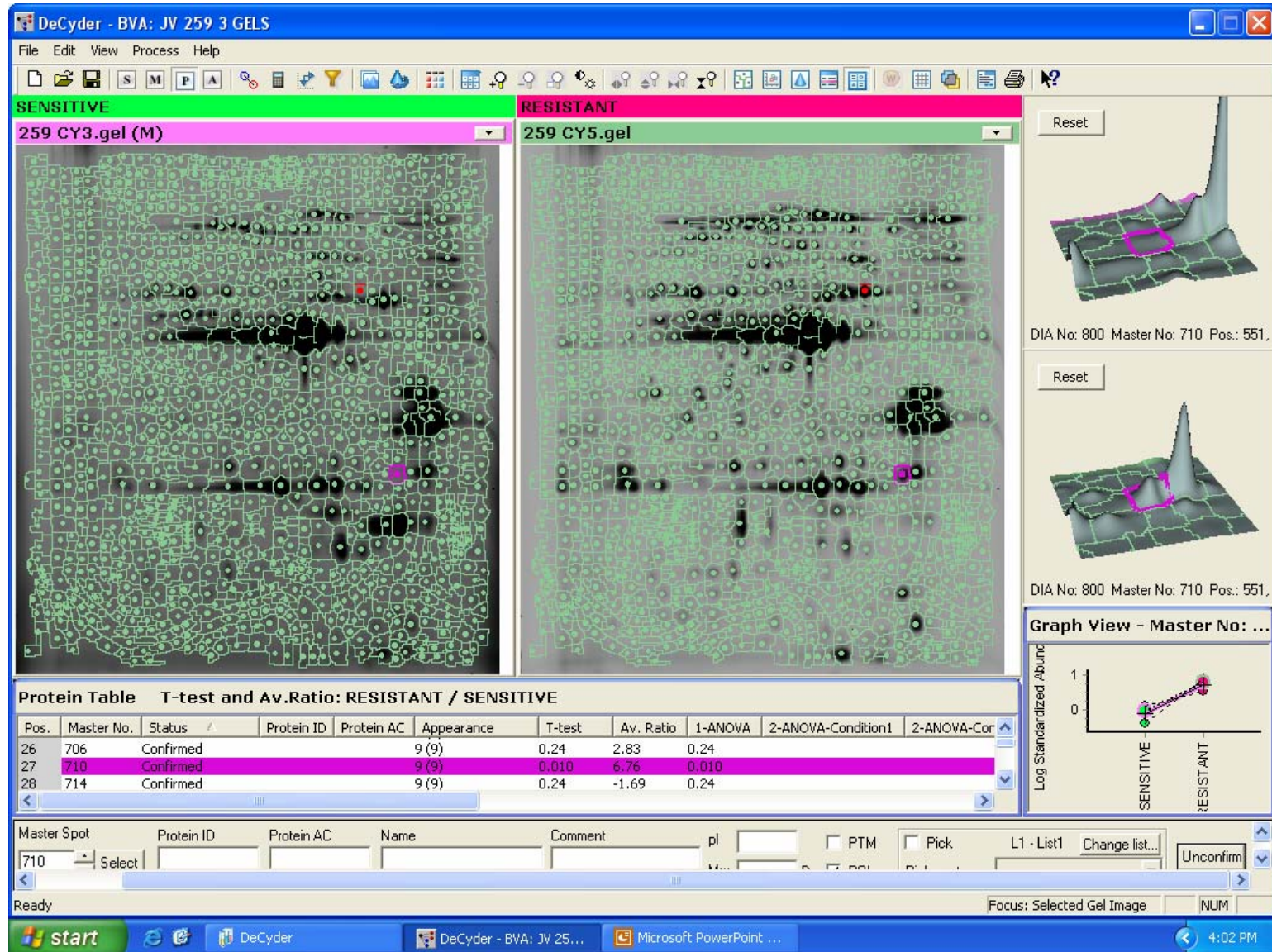
Representation of comparative DeCyder gel analysis of normalized gel image of native strain ATCC (primary image Cy 3 coupled) with Intermediate strain (RS 259) (Secondary image coupled with Cy 5) using BVA module. All the combined results are displayed for **spot IV**. **Panel A** shows the spot IV in both the compared strains. **Panel B** represent graphical analysis for all three independent experiments, **Panel C** mean value of 3D expression of spot IV in both the strains and Pane D shows statistical measurement.



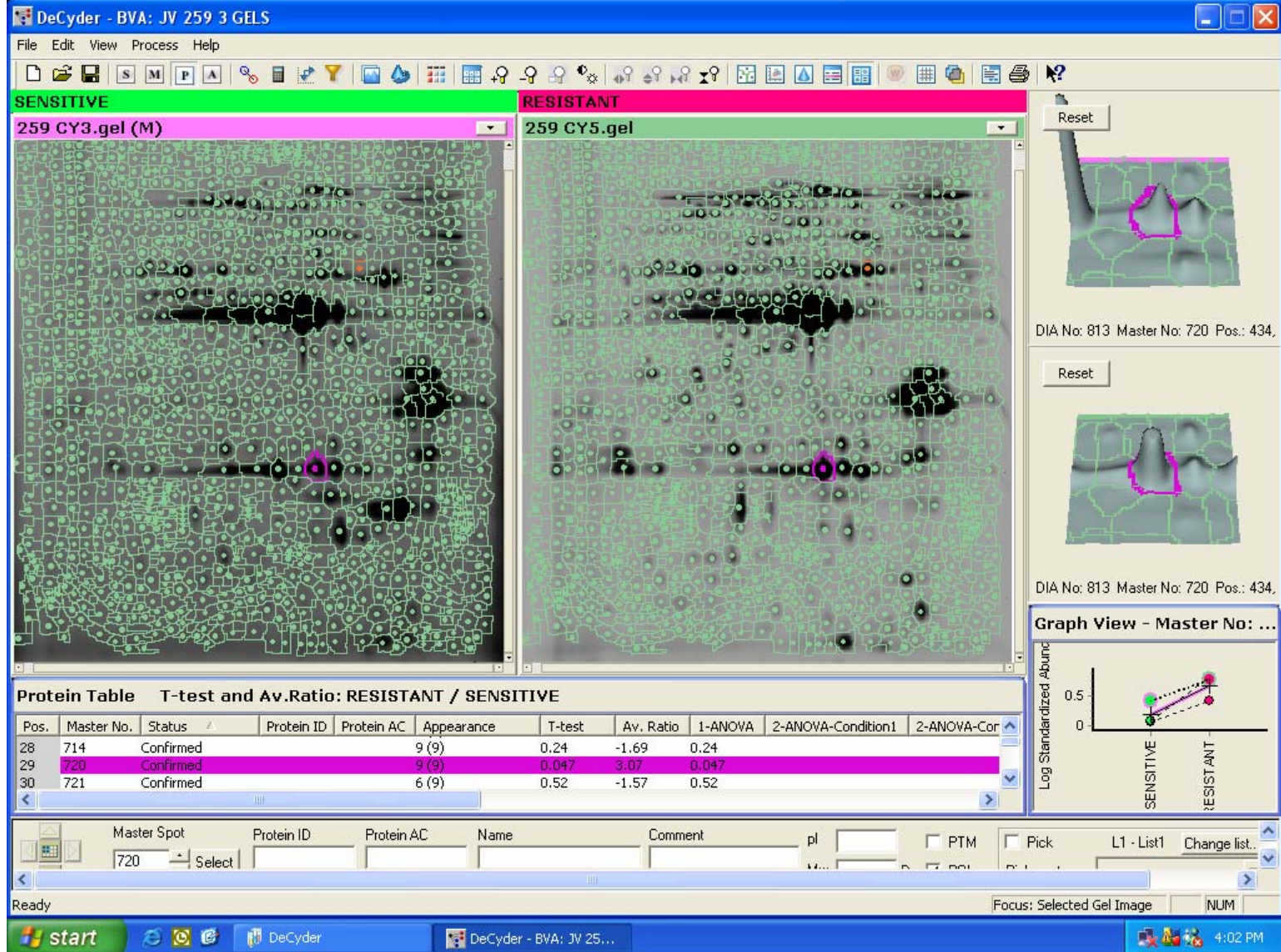
Representation of comparative DeCyder gel analysis of normalized gel image of native strain ATCC (primary image Cy 3 coupled) with Intermediate strain (RS 259) (Secondary image coupled with Cy 5) using BVA module. All the combined results are displayed for **spot V**. **Panel A** shows the spot V in both the compared strains. **Panel B** represent graphical analysis for all three independent experiments, **Panel C** mean value of 3D expression of spot V in both the strains and Pane **D** shows statistical measurement.



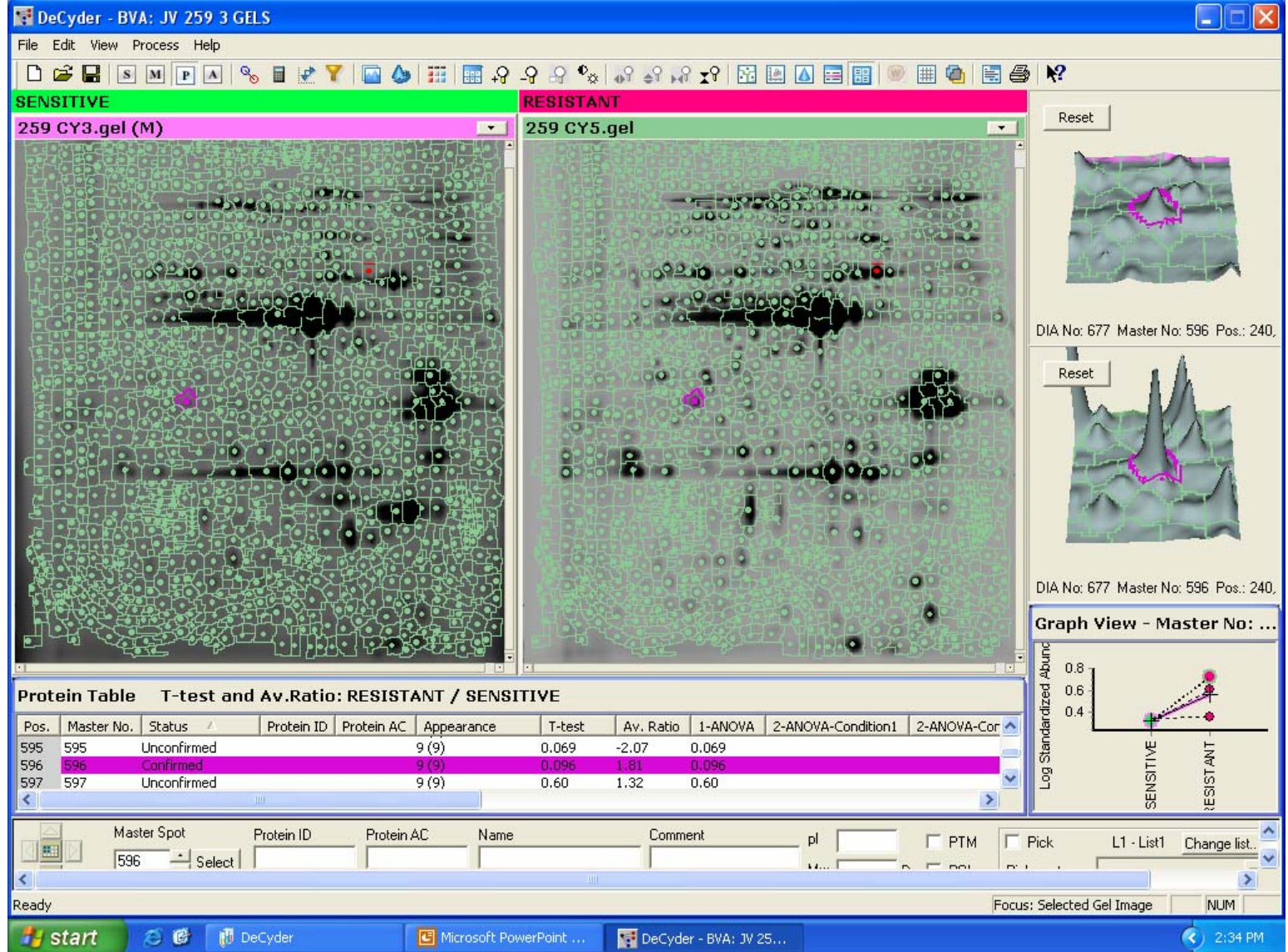
Representation of comparative DeCyder gel analysis of normalized gel image of native strain ATCC (primary image Cy 3 coupled) with Intermediate strain (RS 259) (Secondary image coupled with Cy 5) using BVA module. All the combined results are displayed for **spot VI**. **Panel A** shows the spot VI in both the compared strains. **Panel B** represent graphical analysis for all three independent experiments, **Panel C** mean value of 3D expression of spot VI in both the strains and Pane D shows statistical measurement.



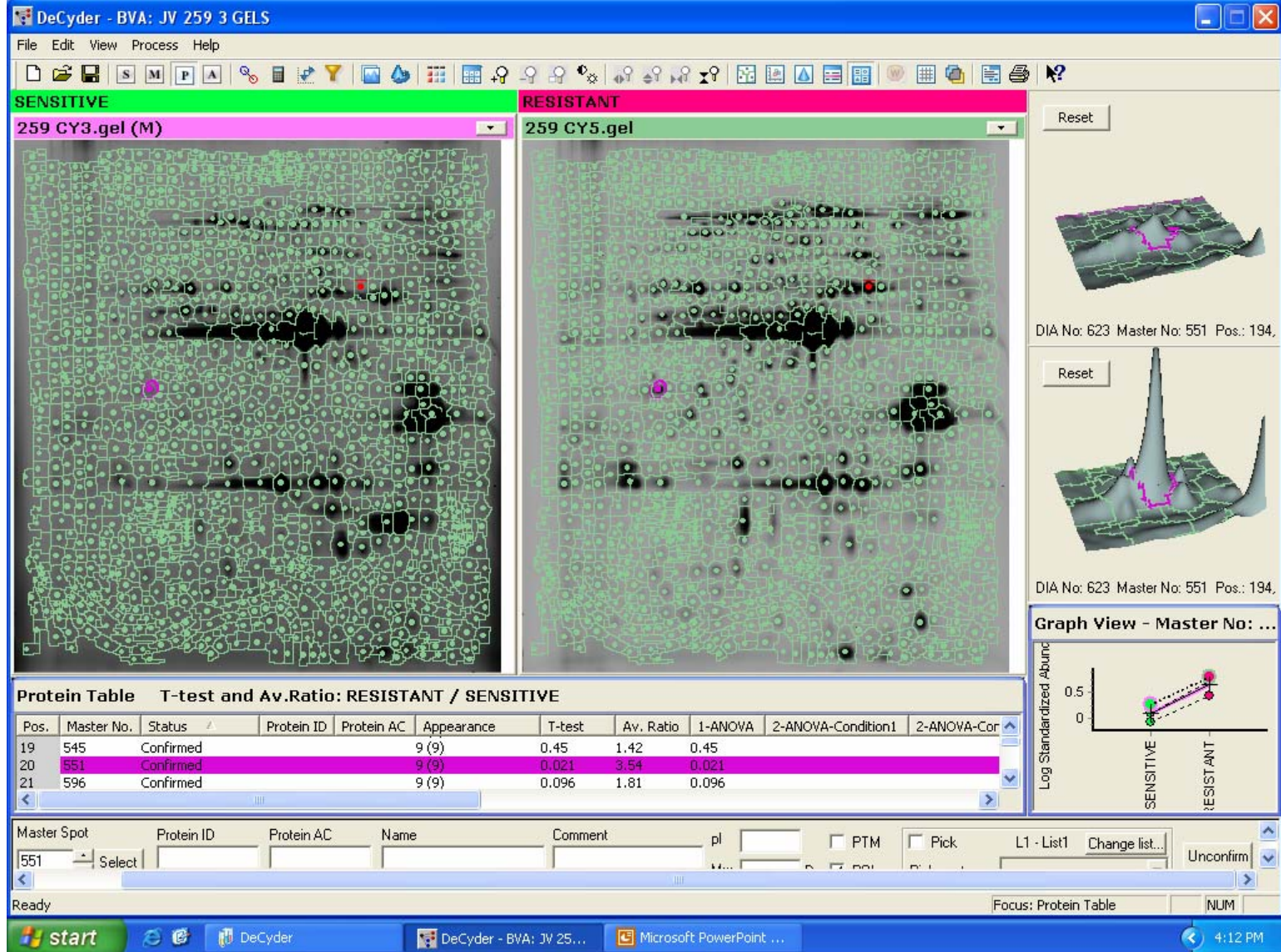
Representation of comparative DeCyder gel analysis of normalized gel image of native strain ATCC (primary image Cy 3 coupled) with Intermediate strain (RS 259) (Secondary image coupled with Cy 5) using BVA module. All the combined results are displayed for **spot VII**. **Panel A** shows the spot VII in both the compared strains. **Panel B** represent graphical analysis for all three independent experiments, **Panel C** mean value of 3D expression of spot VII in both the strains and **Panel D** shows statistical measurement.



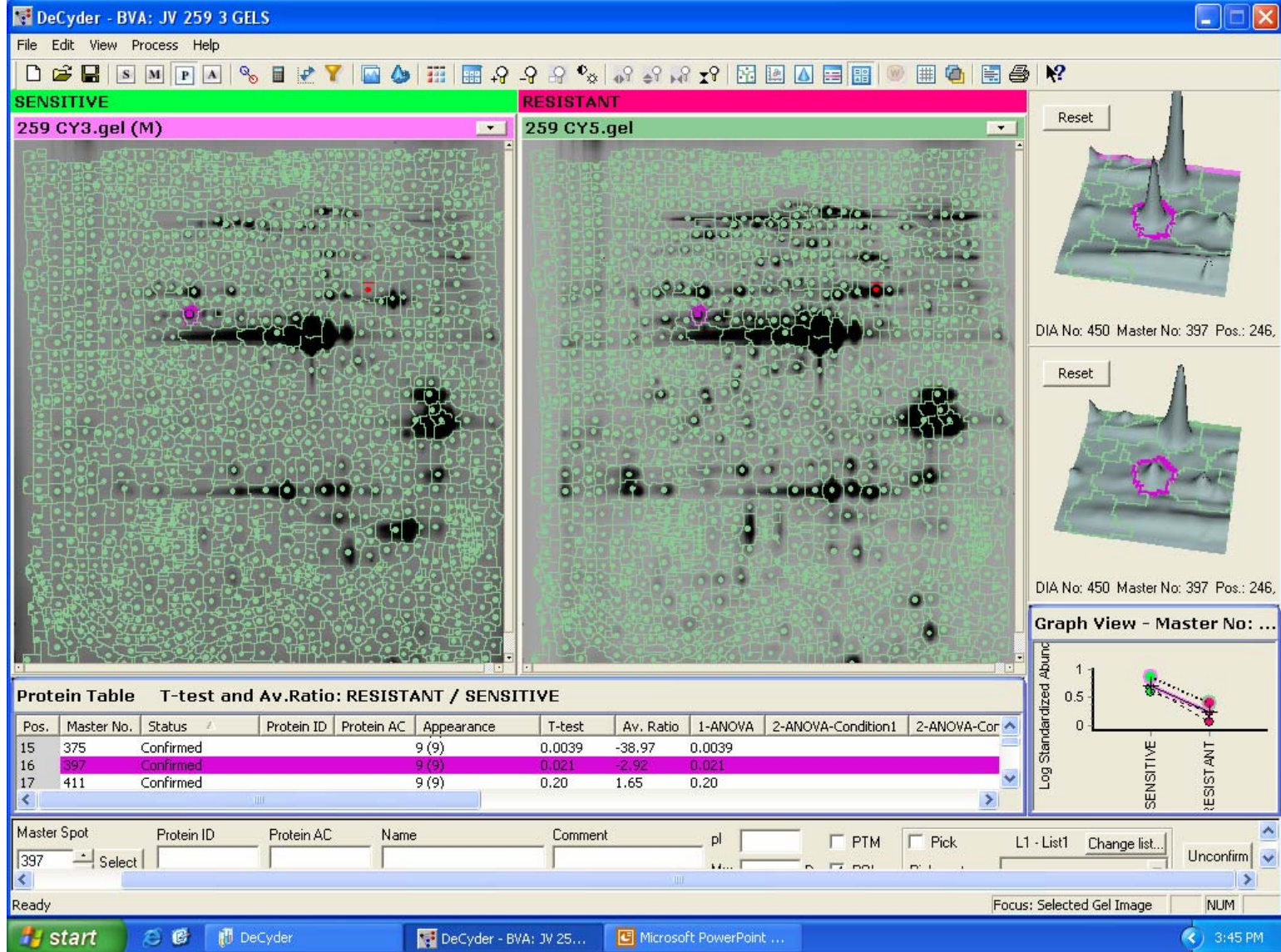
Representation of comparative DeCyder gel analysis of normalized gel image of native strain ATCC (primary image Cy 3 coupled) with Intermediate strain (RS 259) (Secondary image coupled with Cy 5) using BVA module. All the combined results are displayed for **spot VIII**. **Panel A** shows the spot VIII in both the compared strains. **Panel B** represent graphical analysis for all three independent experiments, **Panel C** mean value of 3D expression of spot VIII in both the strains and Pane **D** shows statistical measurement.



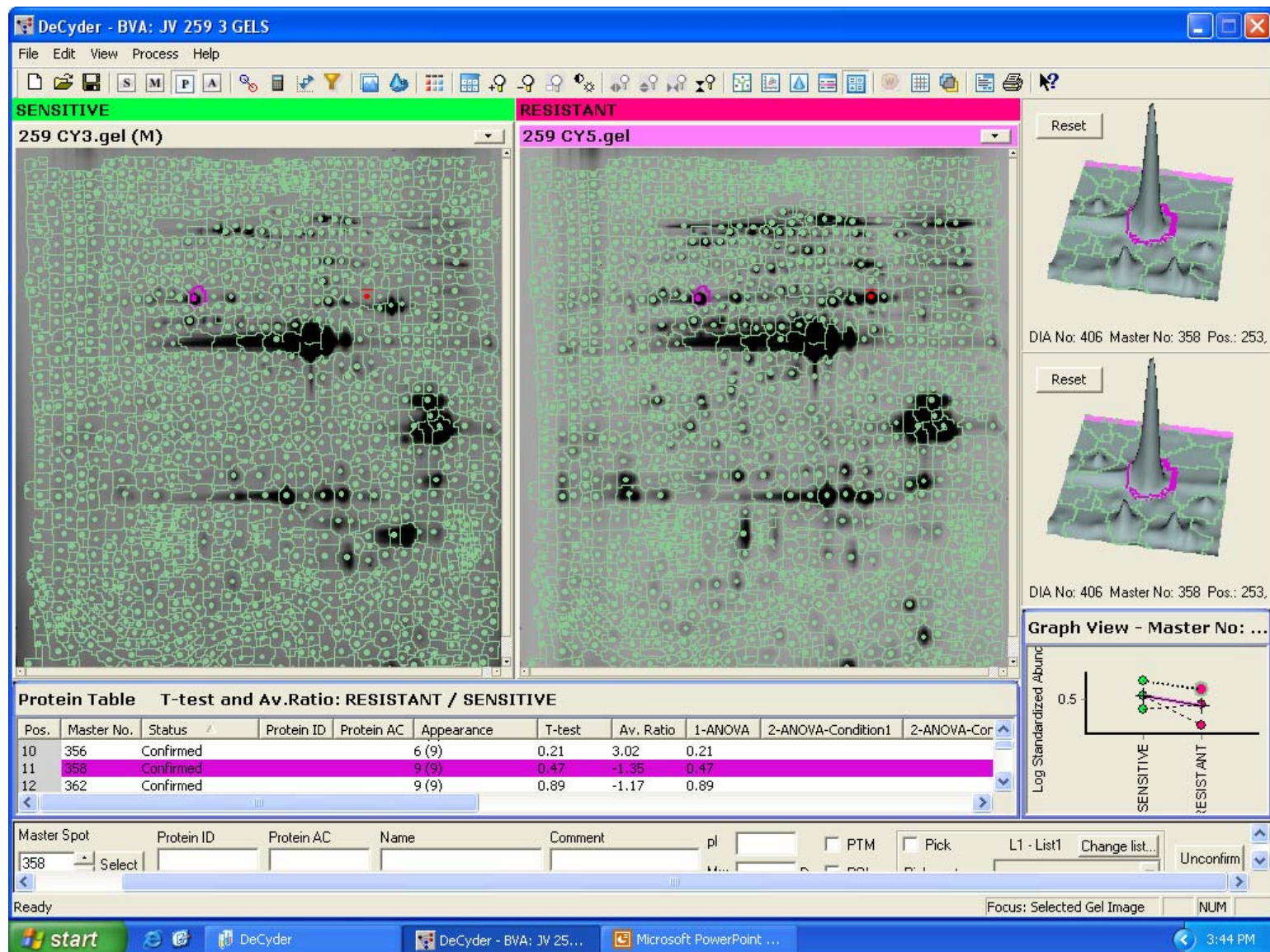
Representation of comparative DeCyder gel analysis of normalized gel image of native strain ATCC (primary image Cy 3 coupled) with Intermediate strain (RS 259) (Secondary image coupled with Cy 5) using BVA module. All the combined results are displayed for **spot X**. **Panel A** shows the spot X in both the compared strains. **Panel B** represent graphical analysis for all three independent experiments, **Panel C** mean value of 3D expression of spot X in both the strains and Pane **D** shows statistical measurement.



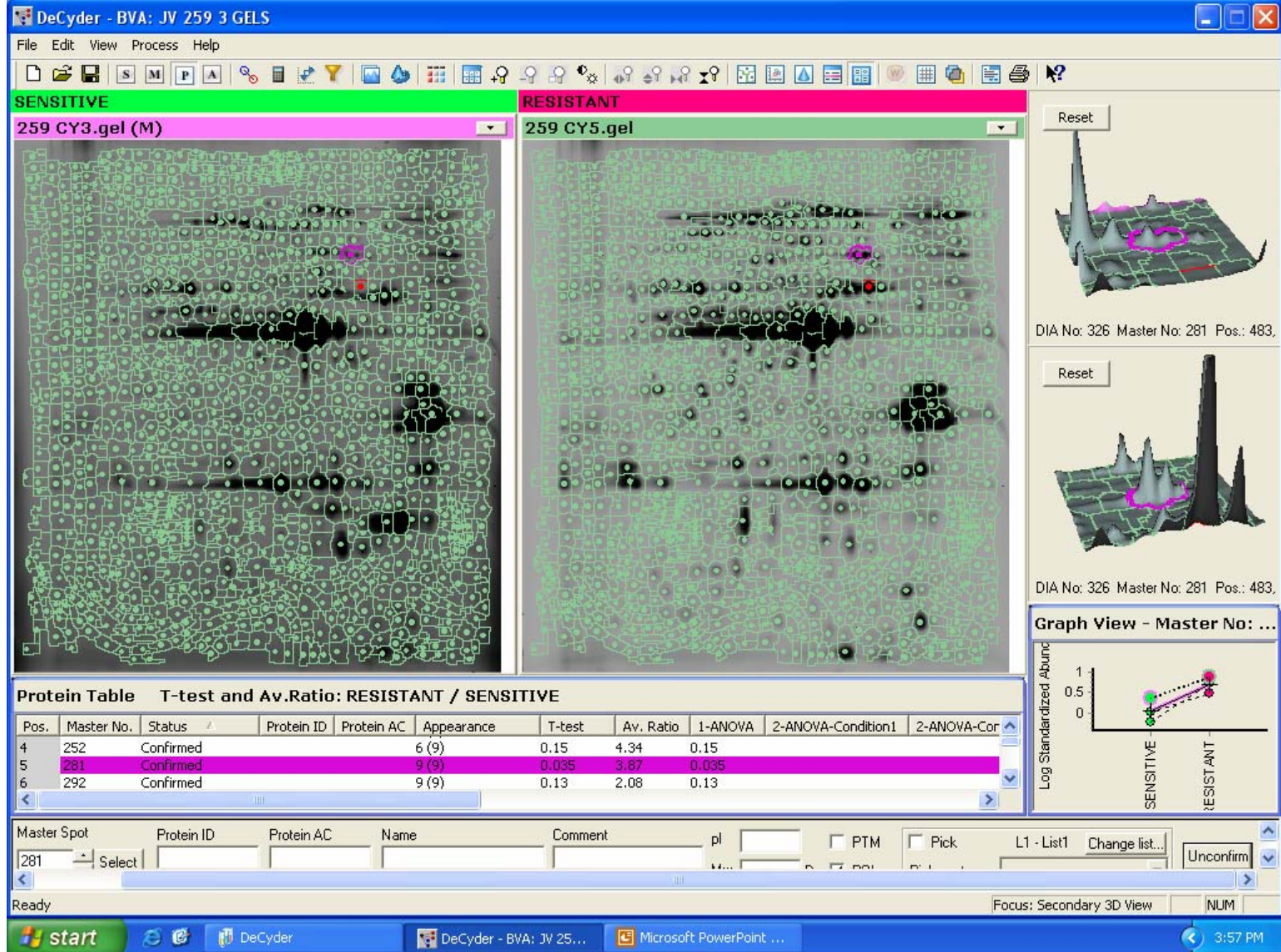
Representation of comparative DeCyder gel analysis of normalized gel image of native strain ATCC (primary image Cy 3 coupled) with Intermediate strain (RS 259) (Secondary image coupled with Cy 5) using BVA module. All the combined results are displayed for **spot XI**. **Panel A** shows the spot XI in both the compared strains. **Panel B** represent graphical analysis for all three independent experiments, **Panel C** mean value of 3D expression of spot XI in both the strains and Pane D shows statistical measurement.



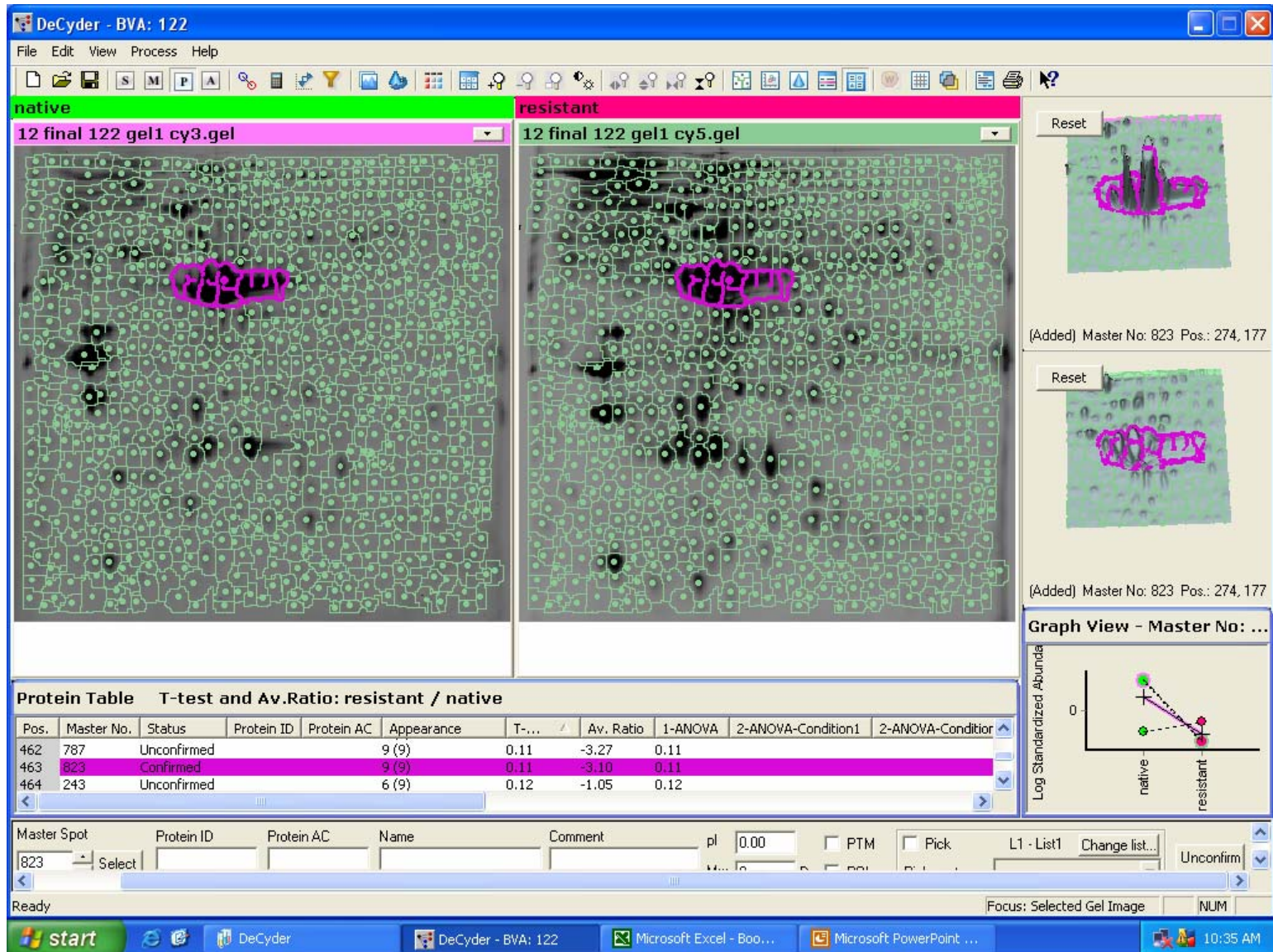
Representation of comparative DeCyder gel analysis of normalized gel image of native strain ATCC (primary image Cy 3 coupled) with Intermediate strain (RS 259) (Secondary image coupled with Cy 5) using BVA module. All the combined results are displayed for **spot XII**. **Panel A** shows the spot XII in both the compared strains. **Panel B** represent graphical analysis for all three independent experiments, **Panel C** mean value of 3D expression of spot XII in both the strains and Pane D shows statistical measurement.



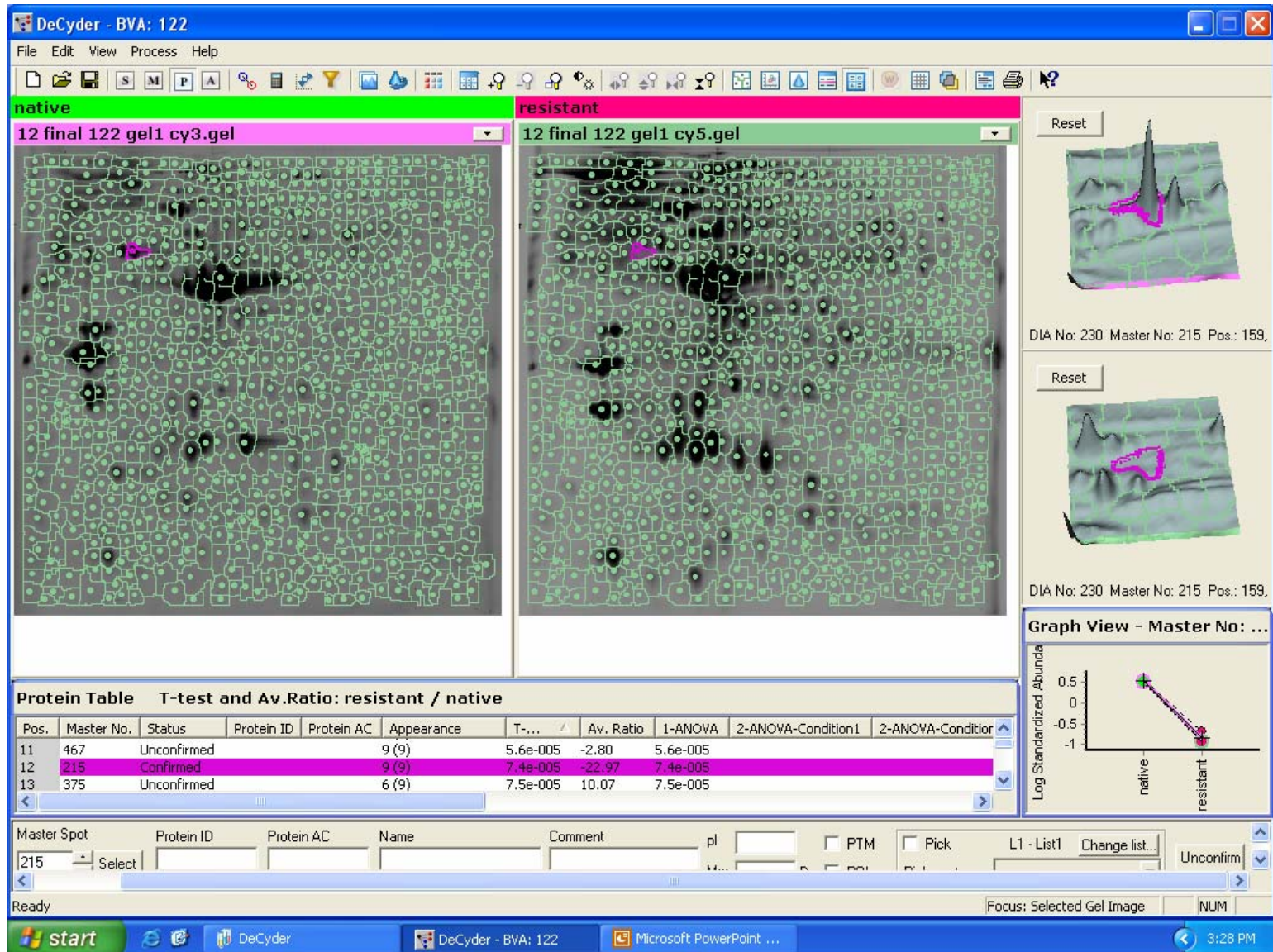
Representation of comparative DeCyder gel analysis of normalized gel image of native strain ATCC (primary image Cy 3 coupled) with Intermediate strain (RS 259) (Secondary image coupled with Cy 5) using BVA module. All the combined results are displayed for **spot XIII**. **Panel A** shows the spot XIII in both the compared strains. **Panel B** represent graphical analysis for all three independent experiments, **Panel C** mean value of 3D expression of spot XIII in both the strains and Pane **D** shows statistical measurement.



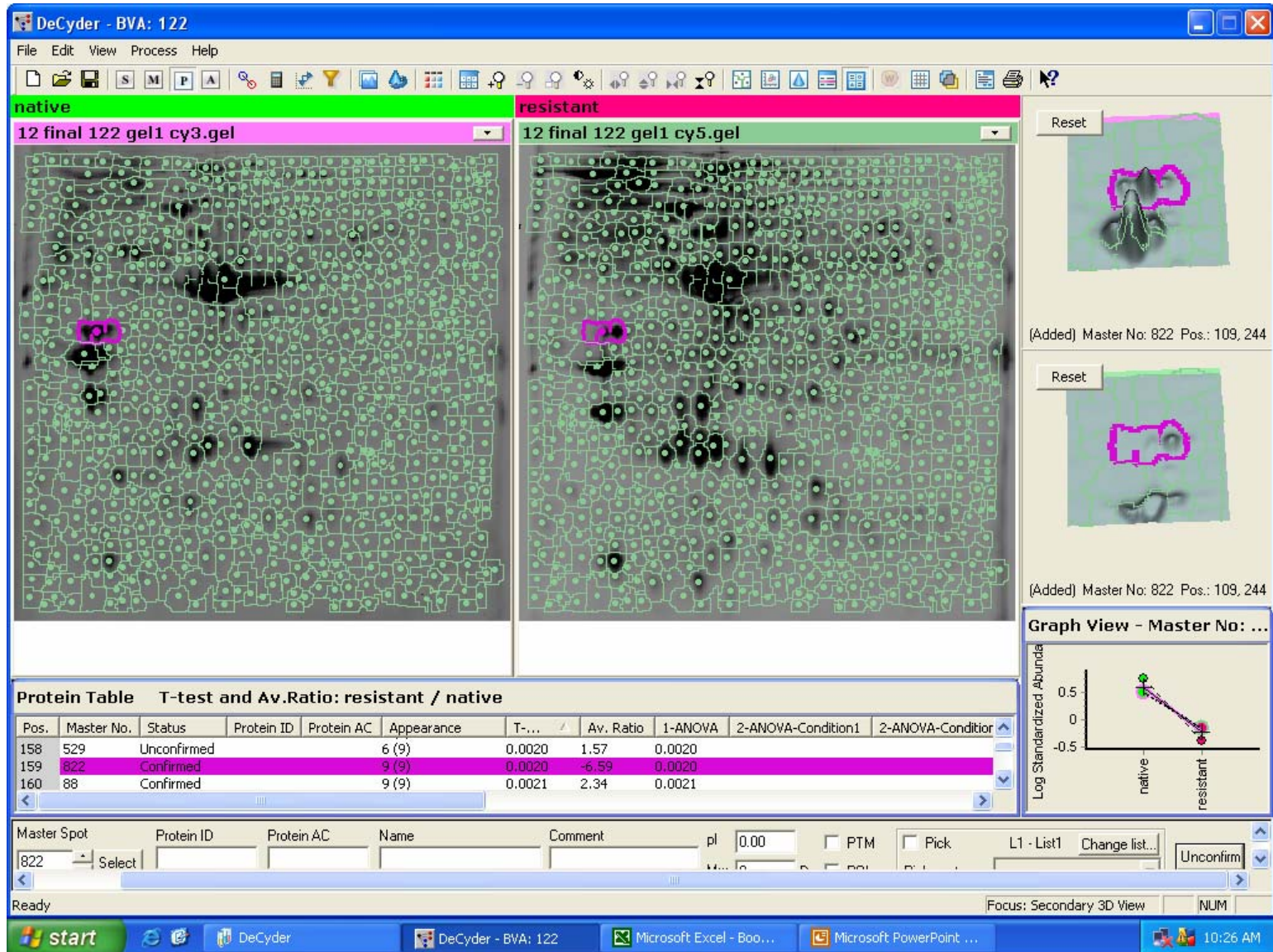
Representation of comparative DeCyder gel analysis of normalized gel image of native strain ATCC (primary image Cy 3 coupled) with Intermediate strain (RS 259) (Secondary image coupled with Cy 5) using BVA module. All the combined results are displayed for **spot XIV**. **Panel A** shows the spot XIV in both the compared strains. **Panel B** represent graphical analysis for all three independent experiments, **Panel C** mean value of 3D expression of spot XIV in both the strains and **Panel D** shows statistical measurement.



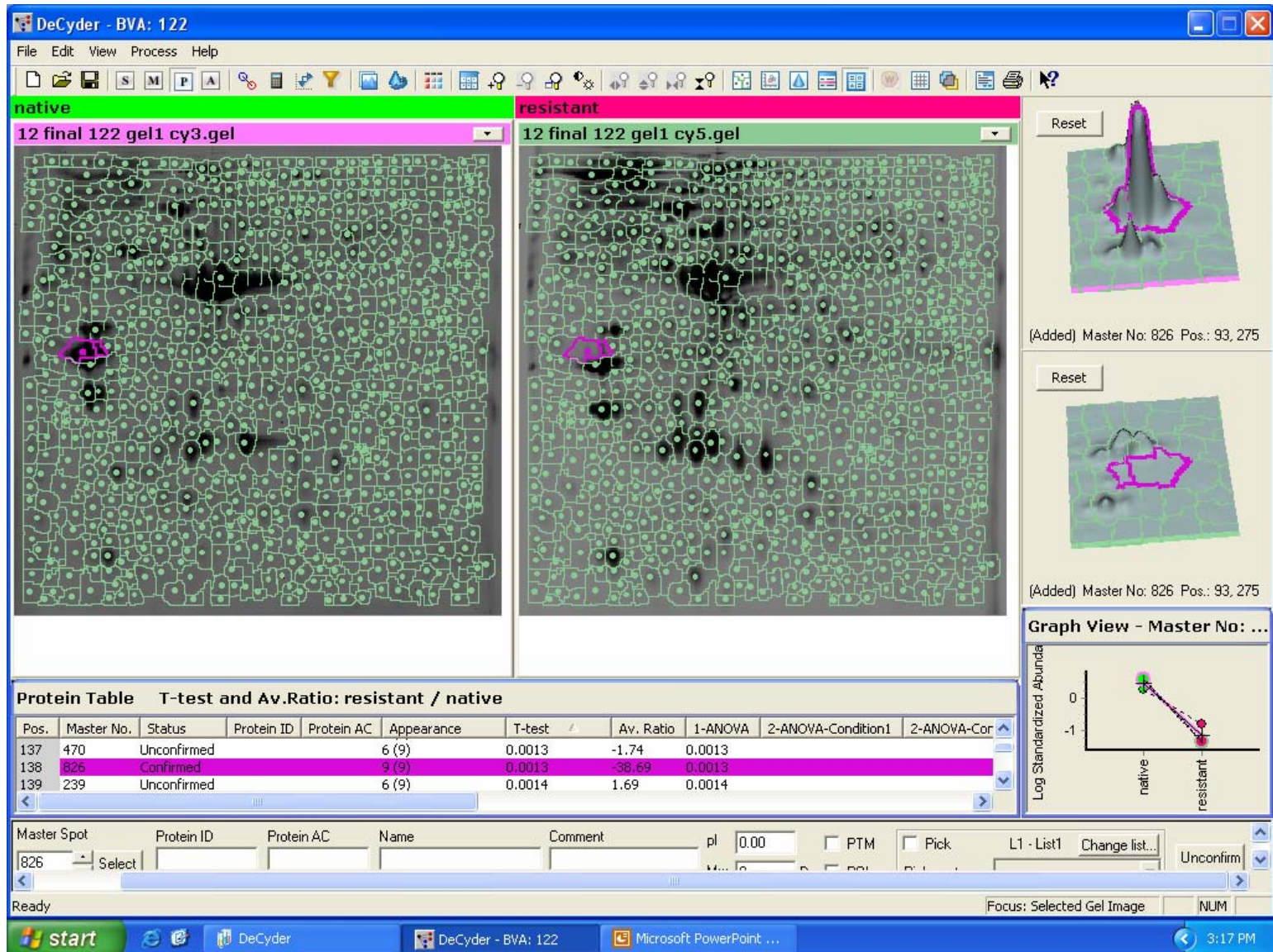
Representation of comparative DeCyder gel analysis of normalized gel image of native strain ATCC (primary image Cy 3 coupled) with low resistant strain (RS 122) (Secondary image coupled with Cy 5) using BVA module. All the combined results are displayed for **spot I**. **Panel A** shows the spot I in both the compared strains. **Panel B** represent graphical analysis for all three independent experiments, **Panel C** mean value of 3D expression of spot I in both the strains and **Panel D** shows statistical measurement.



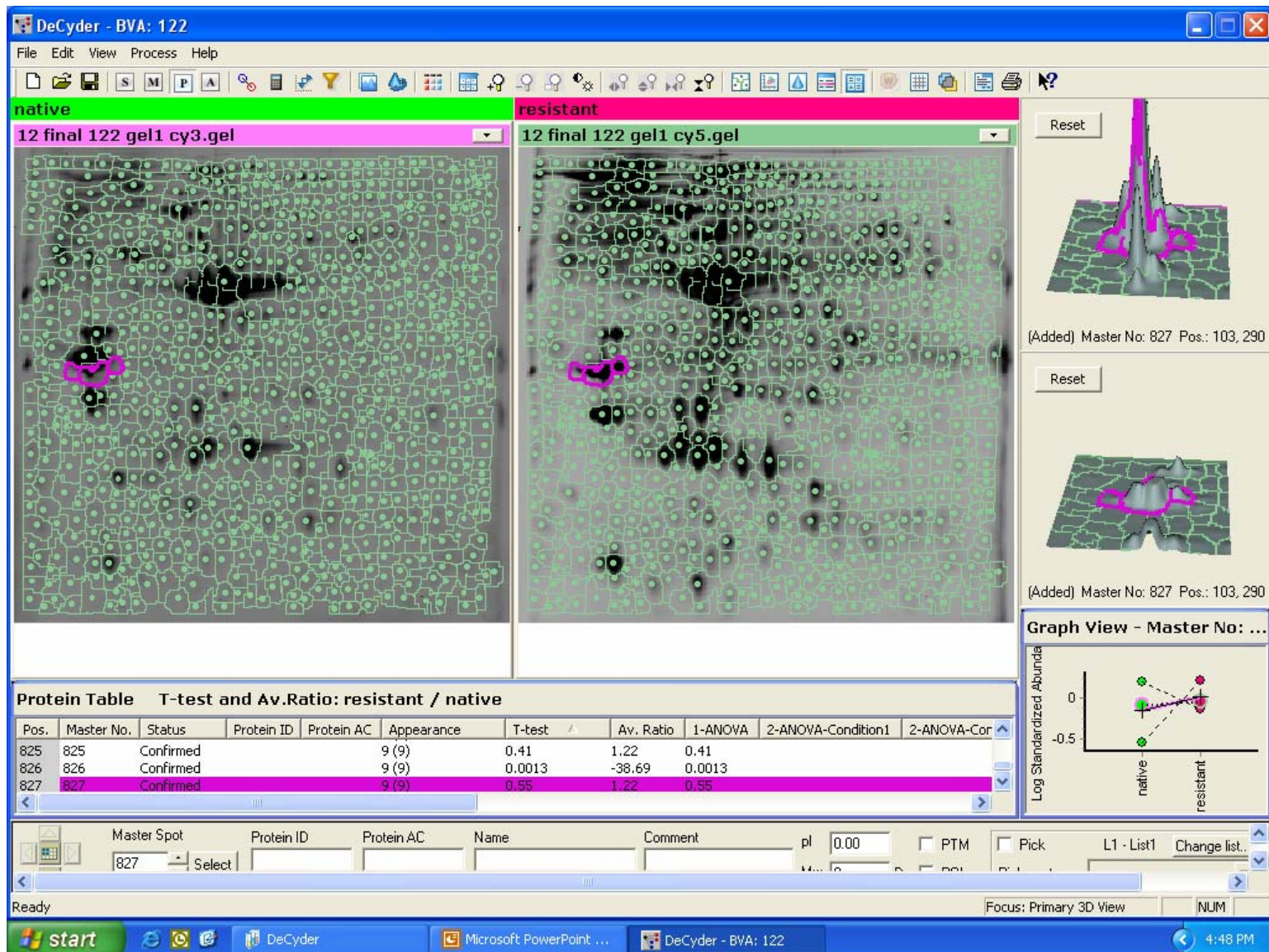
Representation of comparative DeCyder gel analysis of normalized gel image of native strain ATCC (primary image Cy 3 coupled) with low resistant strain (RS 122) (Secondary image coupled with Cy 5) using BVA module. All the combined results are displayed for **spot II**. **Panel A** shows the spot II in both the compared strains. **Panel B** represent graphical analysis for all three independent experiments, **Panel C** mean value of 3D expression of spot II in both the strains and **Panel D** shows statistical measurement.



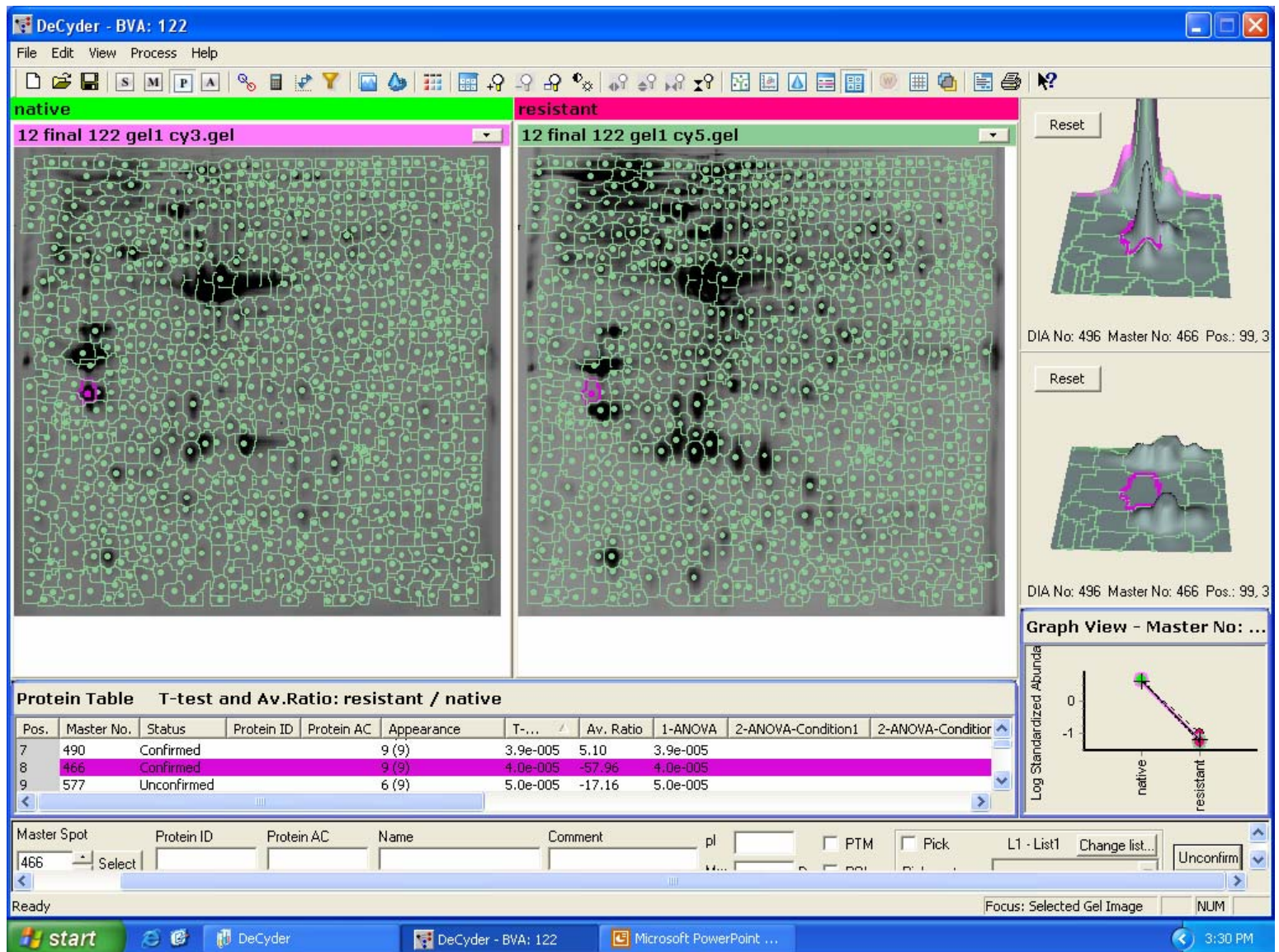
Representation of comparative DeCyder gel analysis of normalized gel image of native strain ATCC (primary image Cy 3 coupled) with low resistant strain (RS 122) (Secondary image coupled with Cy 5) using BVA module. All the combined results are displayed for **spot III**. **Panel A** shows the spot III in both the compared strains. **Panel B** represent graphical analysis for all three independent experiments, **Panel C** mean value of 3D expression of spot III in both the strains and **Panel D** shows statistical measurement.



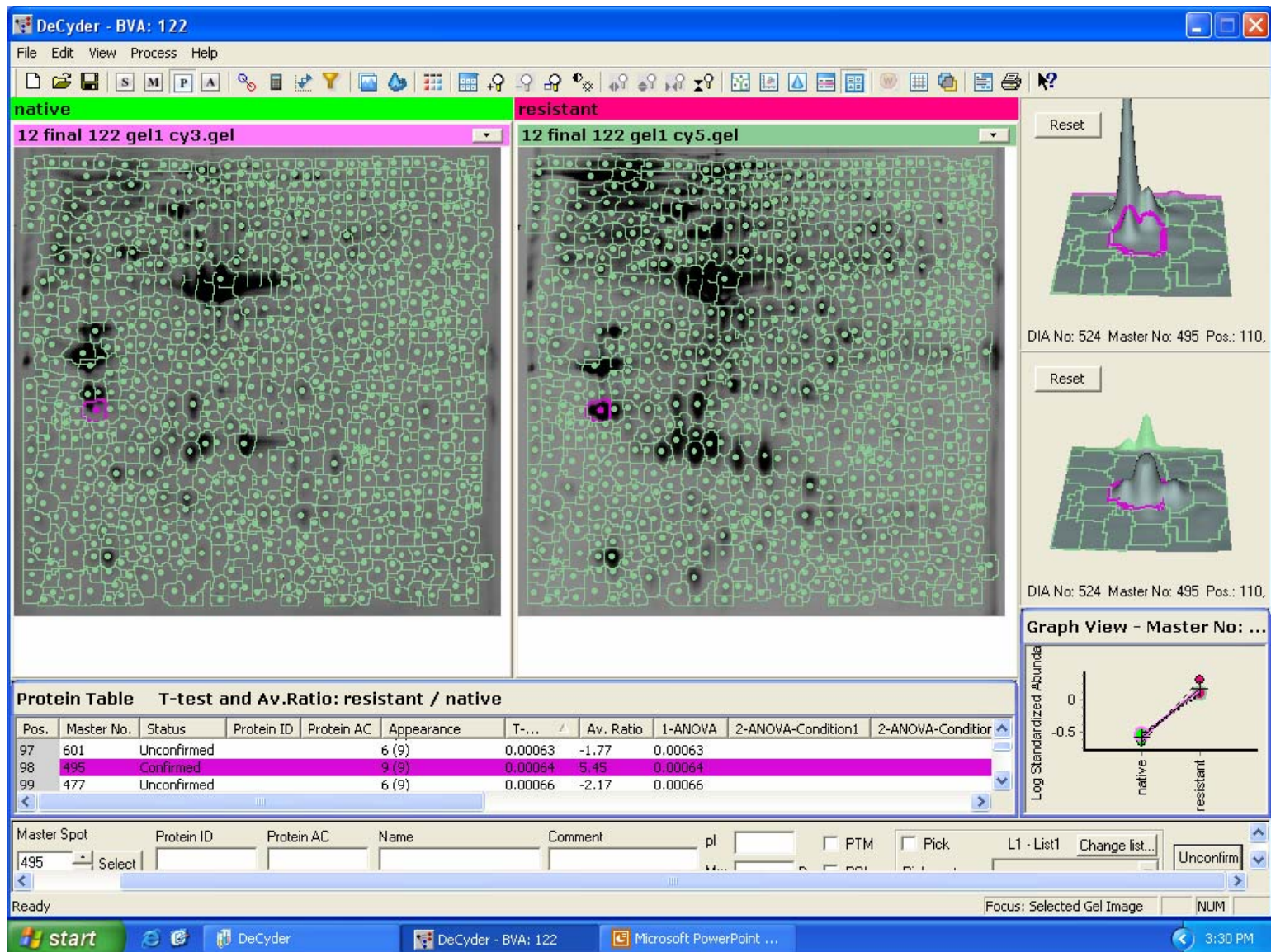
Representation of comparative DeCyder gel analysis of normalized gel image of native strain ATCC (primary image Cy 3 coupled) with low resistant strain (RS 122) (Secondary image coupled with Cy 5) using BVA module. All the combined results are displayed for **spot IV**. **Panel A** shows the spot IV in both the compared strains. **Panel B** represent graphical analysis for all three independent experiments, **Panel C** mean value of 3D expression of spot IV in both the strains and Pane D shows statistical measurement.



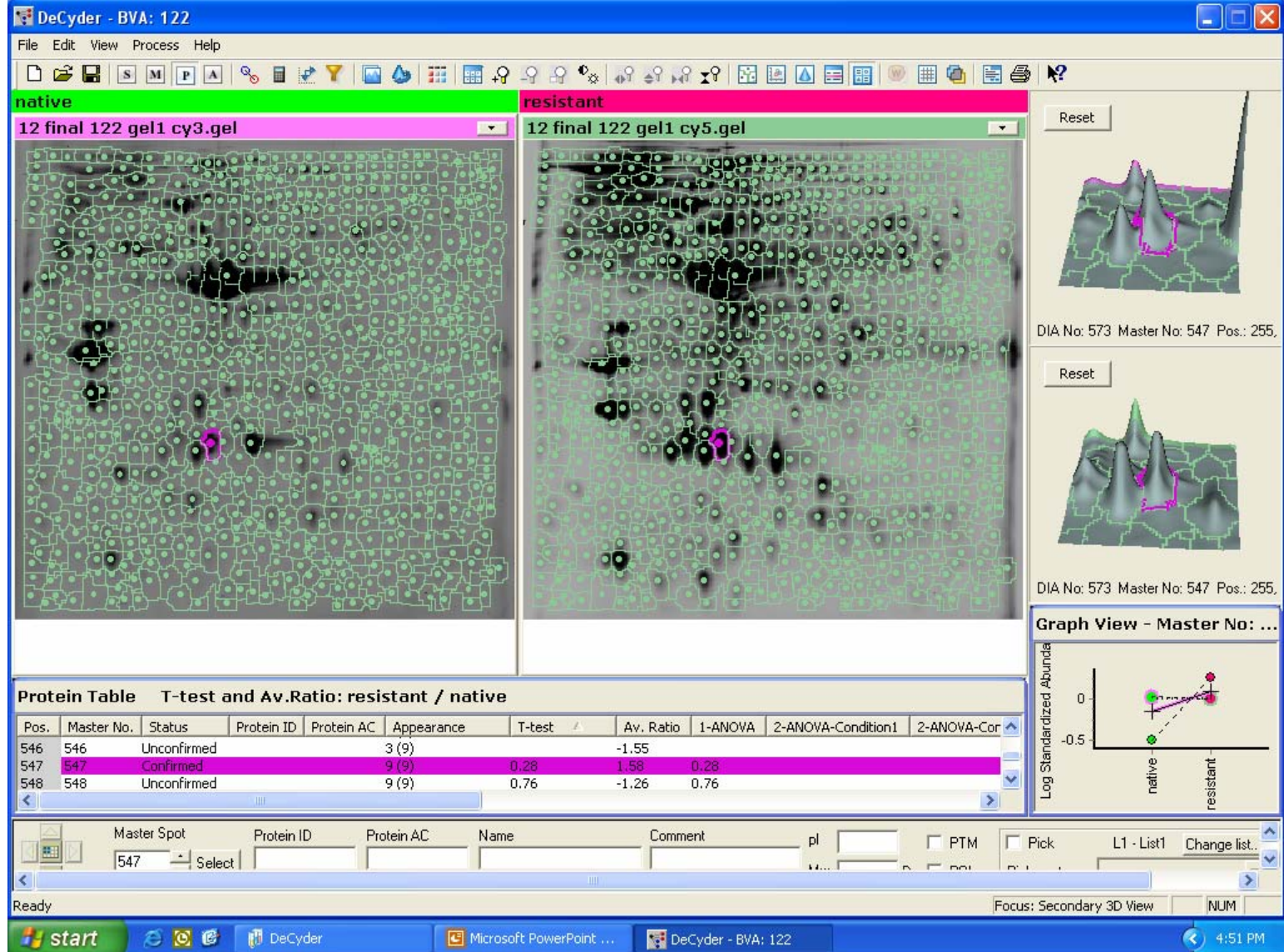
Representation of comparative DeCyder gel analysis of normalized gel image of native strain ATCC (primary image Cy 3 coupled) with low resistant strain (RS 122) (Secondary image coupled with Cy 5) using BVA module. All the combined results are displayed for **spot V**. **Panel A** shows the spot V in both the compared strains. **Panel B** represent graphical analysis for all three independent experiments, **Panel C** mean value of 3D expression of spot V in both the strains and **Panel D** shows statistical measurement.



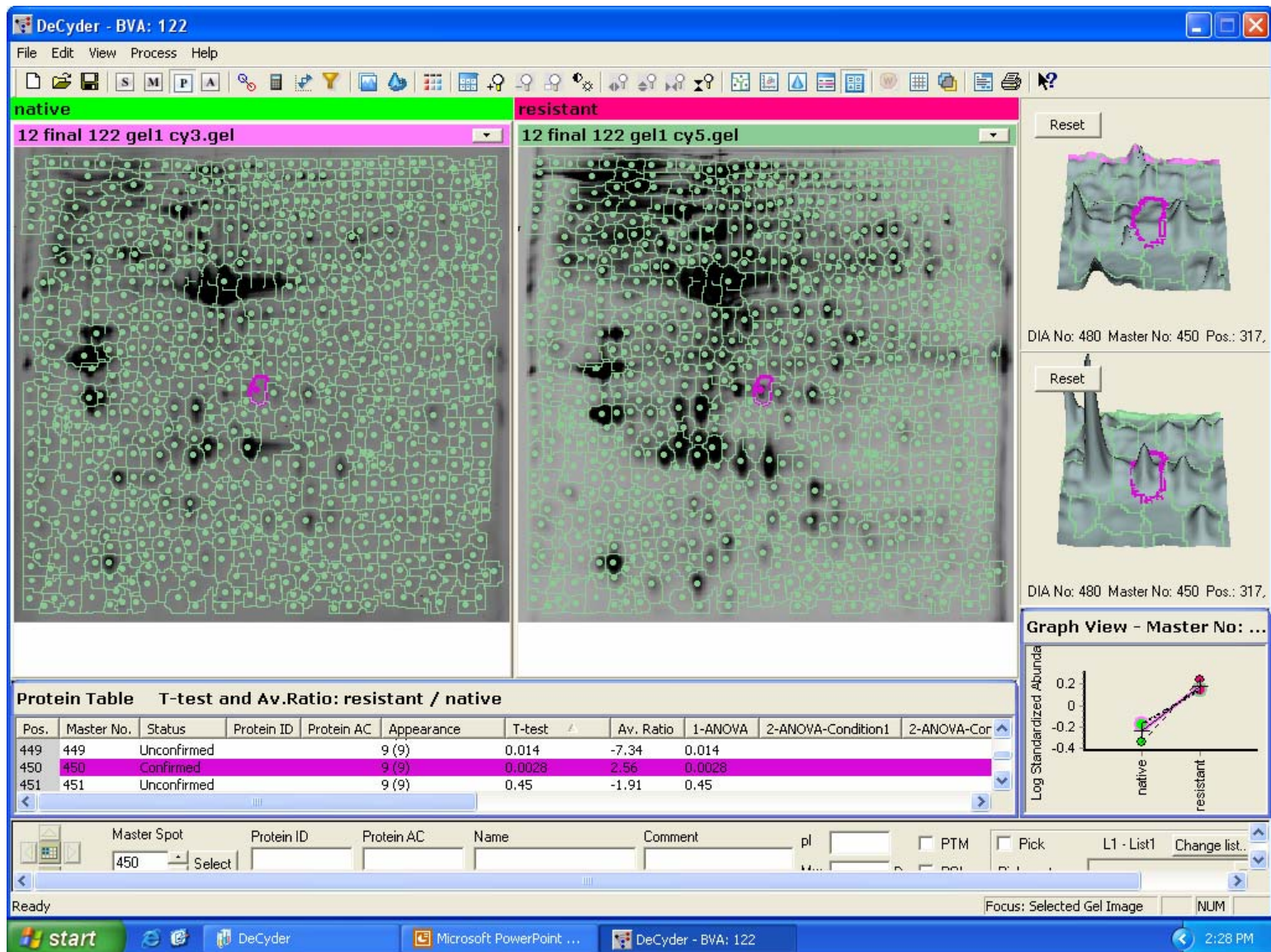
Representation of comparative DeCyder gel analysis of normalized gel image of native strain ATCC (primary image Cy 3 coupled) with low resistant strain (RS 122) (Secondary image coupled with Cy 5) using BVA module. All the combined results are displayed for **spot VI**. **Panel A** shows the spot VI in both the compared strains. **Panel B** represent graphical analysis for all three independent experiments, **Panel C** mean value of 3D expression of spot VI in both the strains and **Panel D** shows statistical measurement.



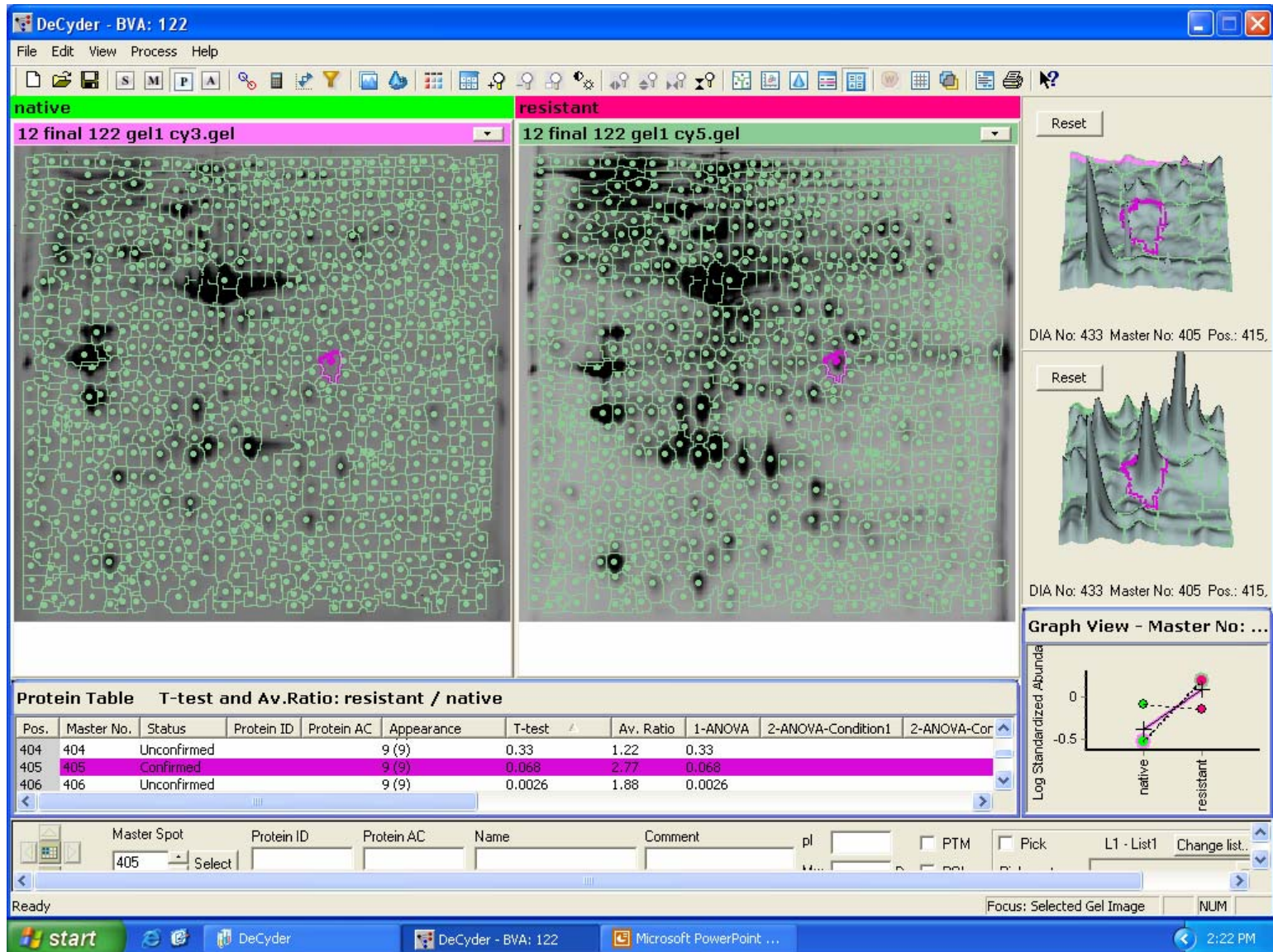
Representation of comparative DeCyder gel analysis of normalized gel image of native strain ATCC (primary image Cy 3 coupled) with low resistant strain (RS 122) (Secondary image coupled with Cy 5) using BVA module. All the combined results are displayed for **spot VII**. **Panel A** shows the spot VII in both the compared strains. **Panel B** represent graphical analysis for all three independent experiments, **Panel C** mean value of 3D expression of spot VII in both the strains and **Panel D** shows statistical measurement.



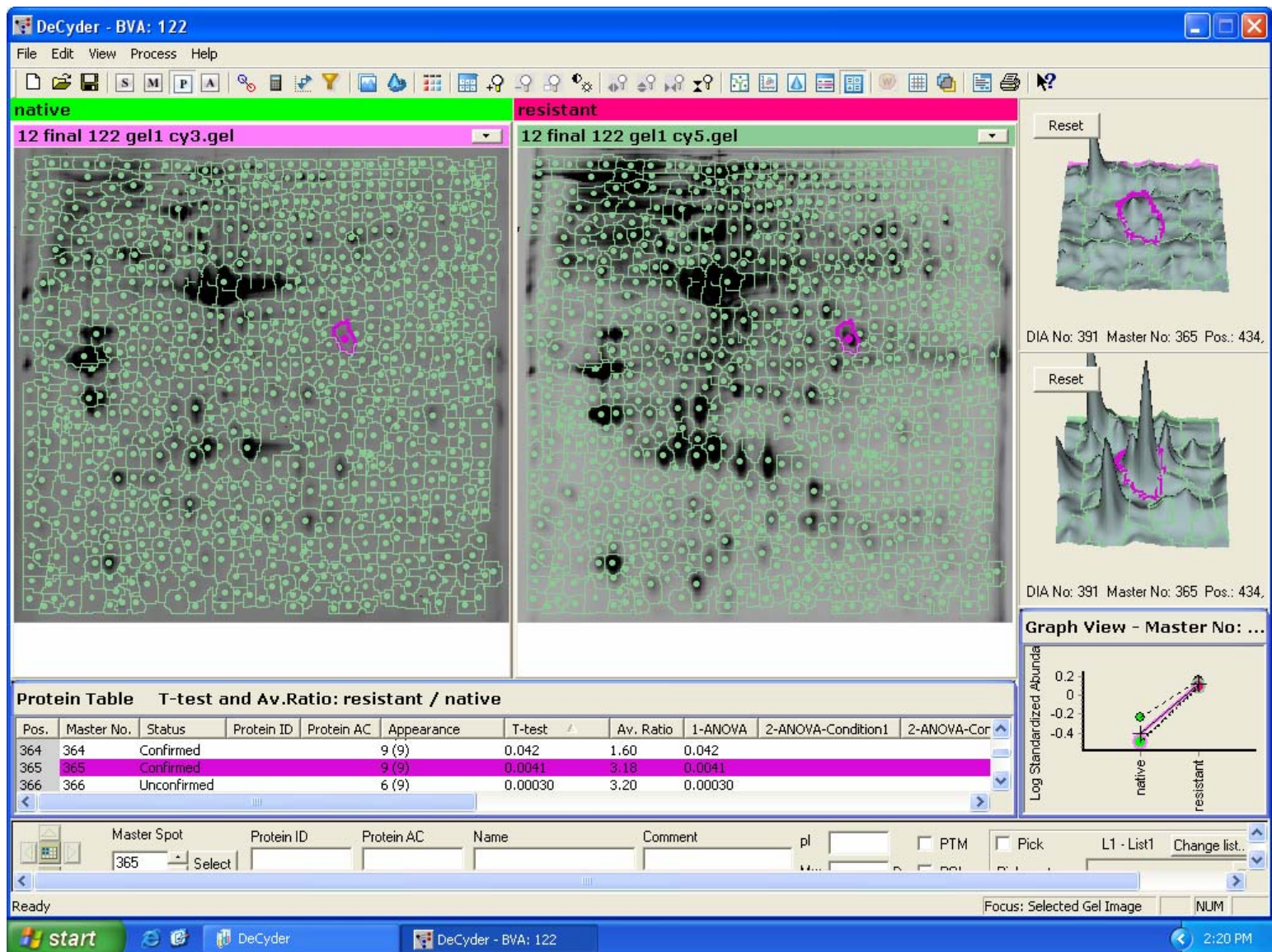
Representation of comparative DeCyder gel analysis of normalized gel image of native strain ATCC (primary image Cy 3 coupled) with low resistant strain (RS 122) (Secondary image coupled with Cy 5) using BVA module. All the combined results are displayed for **spot VIII**. **Panel A** shows the **spot VIII** in both the compared strains. **Panel B** represent graphical analysis for all three independent experiments, **Panel C** mean value of 3D expression of spot VIII in both the strains and **Panel D** shows statistical measurement.



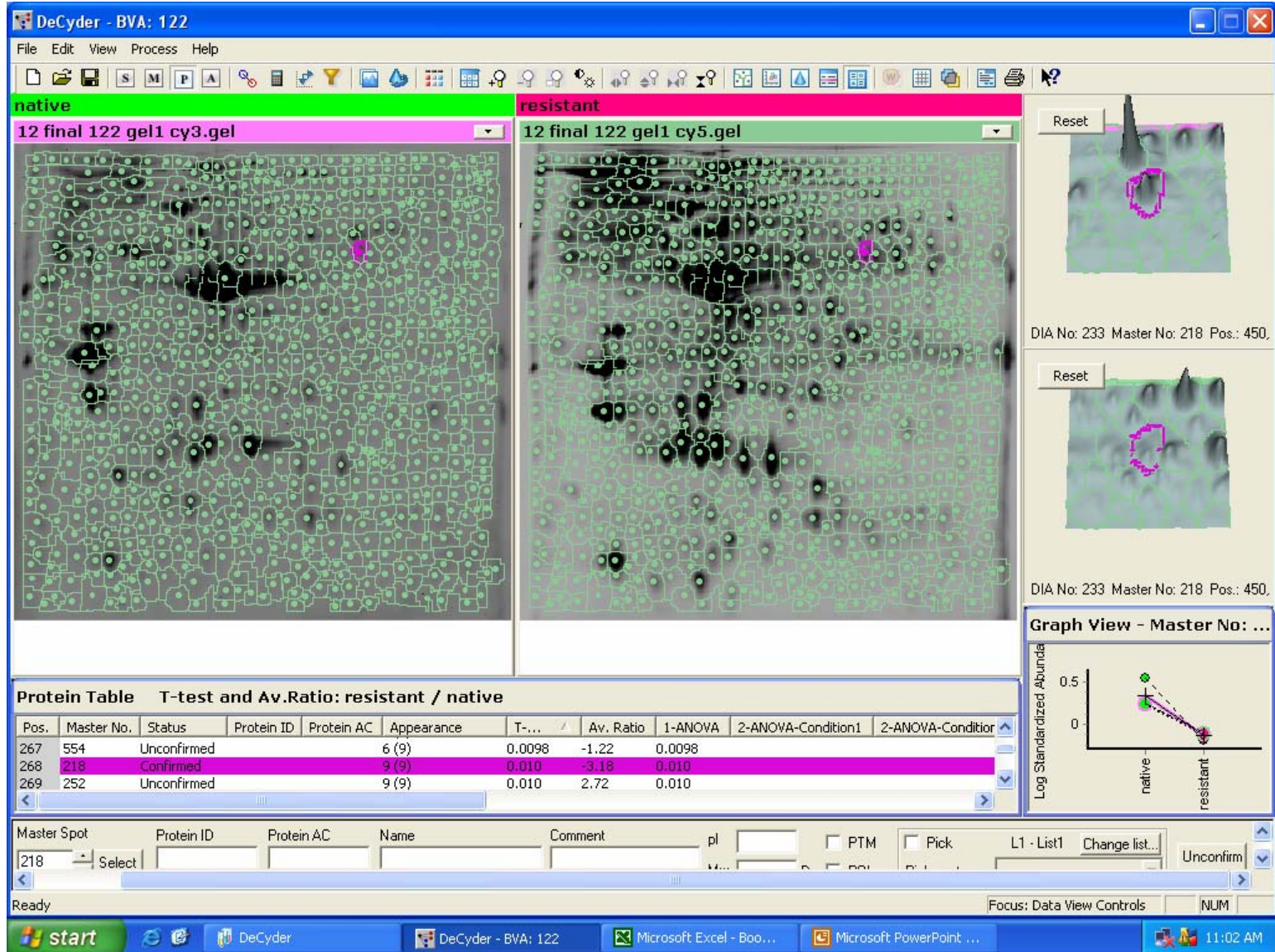
Representation of comparative DeCyder gel analysis of normalized gel image of native strain ATCC (primary image Cy 3 coupled) with low resistant strain (RS 122) (Secondary image coupled with Cy 5) using BVA module. All the combined results are displayed for **spot IX**. **Panel A** shows the **spot IX** in both the compared strains. **Panel B** represent graphical analysis for all three independent experiments, **Panel C** mean value of 3D expression of spot IX in both the strains and Pane D shows statistical measurement.



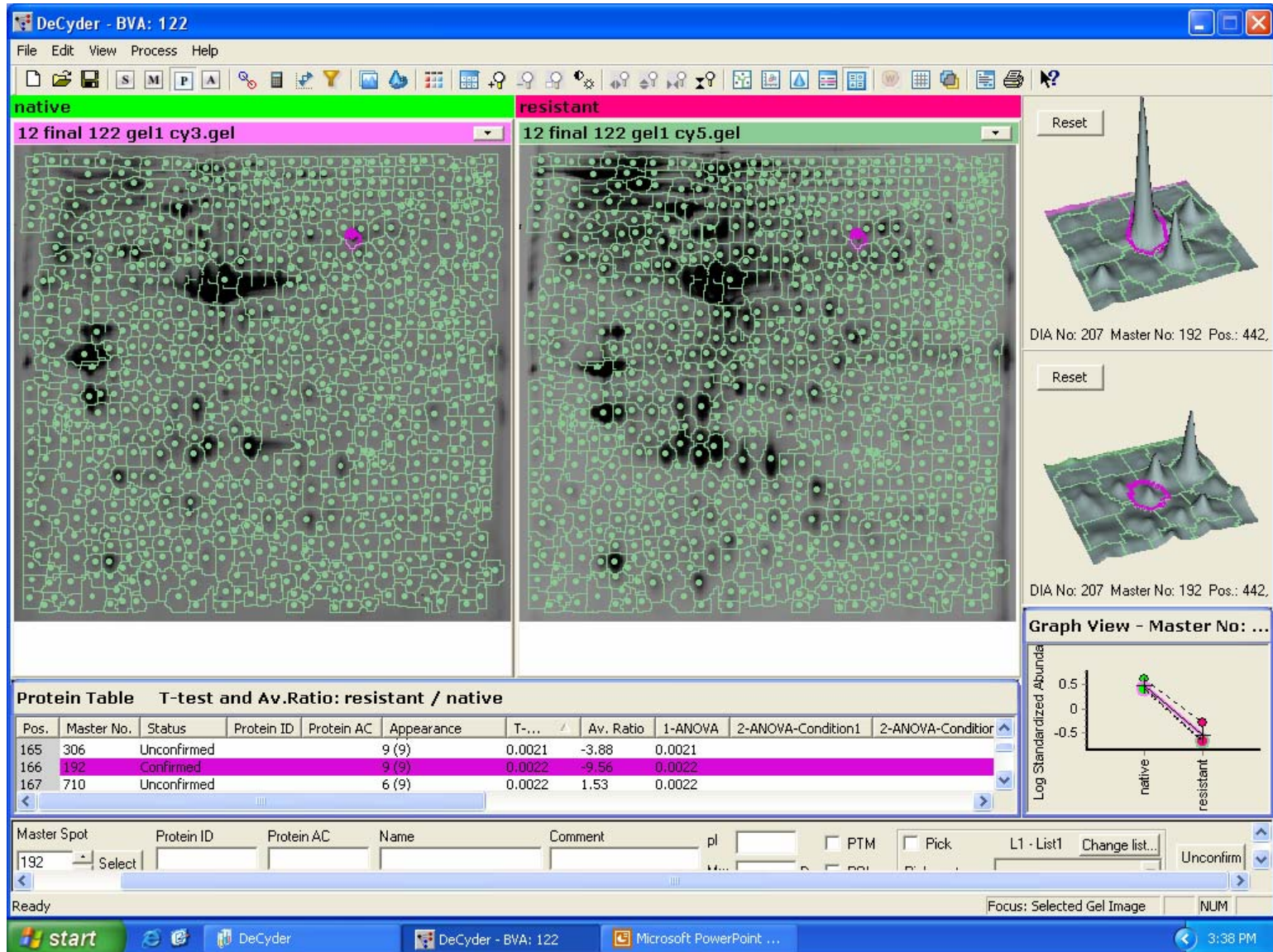
Representation of comparative DeCyder gel analysis of normalized gel image of native strain ATCC (primary image Cy 3 coupled) with low resistant strain (RS 122) (Secondary image coupled with Cy 5) using BVA module. All the combined results are displayed for **spot X**. **Panel A** shows the **spot X** in both the compared strains. **Panel B** represent graphical analysis for all three independent experiments, **Panel C** mean value of 3D expression of spot X in both the strains and Pane D shows statistical measurement.



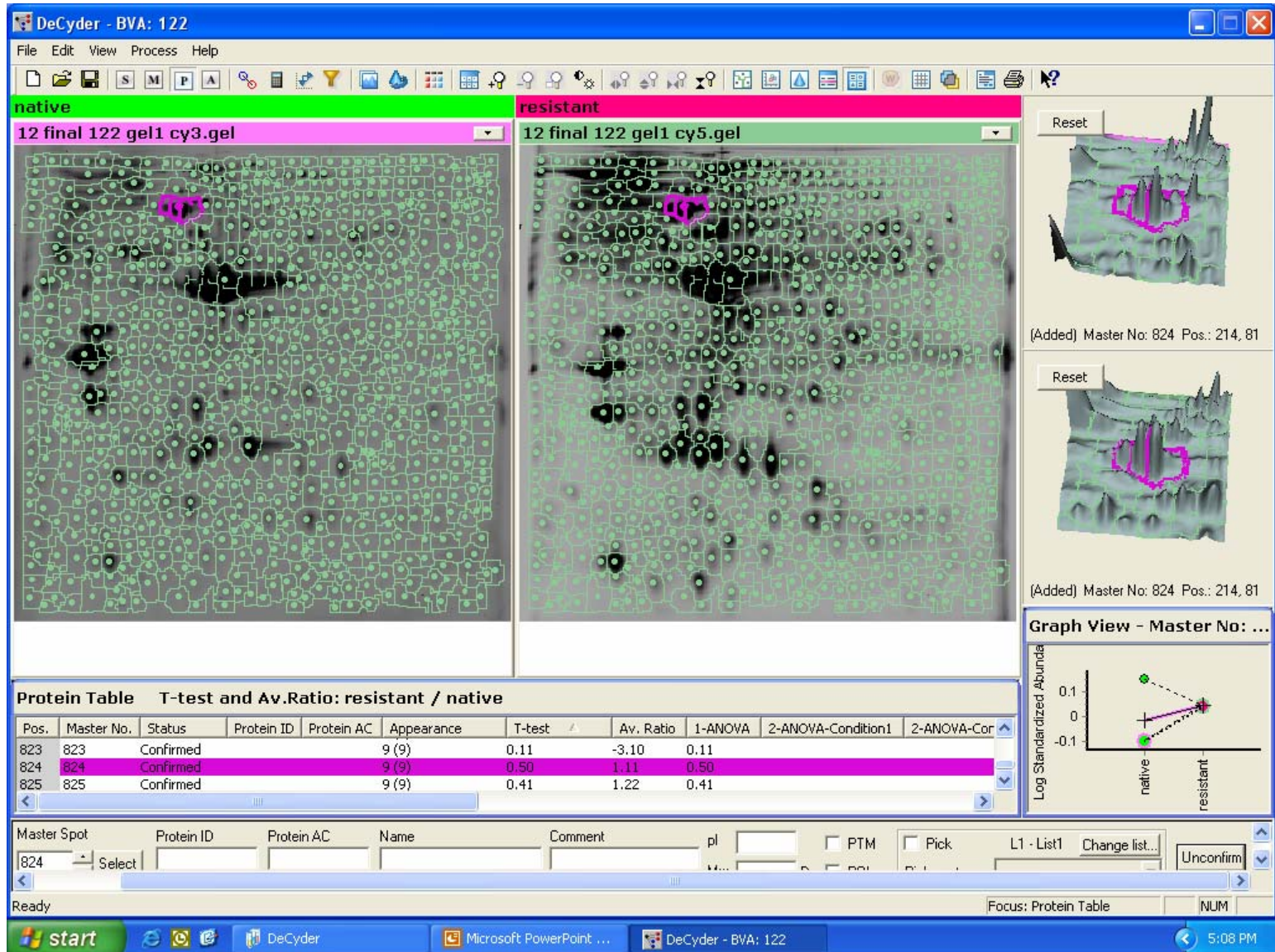
Representation of comparative DeCyder gel analysis of normalized gel image of native strain ATCC (primary image Cy 3 coupled) with low resistant strain (RS 122) (Secondary image coupled with Cy 5) using BVA module. All the combined results are displayed for **spot XI**. **Panel A** shows the **spot XI** in both the compared strains. **Panel B** represent graphical analysis for all three independent experiments, **Panel C** mean value of 3D expression of spot XI in both the strains and Pane D shows statistical measurement.



Representation of comparative DeCyder gel analysis of normalized gel image of native strain ATCC (primary image Cy 3 coupled) with low resistant strain (RS 122) (Secondary image coupled with Cy 5) using BVA module. All the combined results are displayed for **spot XII**. **Panel A** shows the spot XII in both the compared strains. **Panel B** represent graphical analysis for all three independent experiments, **Panel C** mean value of 3D expression of spot XII in both the strains and **Panel D** shows statistical measurement.



Representation of comparative DeCyder gel analysis of normalized gel image of native strain ATCC (primary image Cy 3 coupled) with low resistant strain (RS 122) (Secondary image coupled with Cy 5) using BVA module. All the combined results are displayed for **spot XIII**. **Panel A** shows the spot XIII in both the compared strains. **Panel B** represent graphical analysis for all three independent experiments, **Panel C** mean value of 3D expression of spot XIII in both the strains and **Panel D** shows statistical measurement.



Representation of comparative DeCyder gel analysis of normalized gel image of native strain ATCC (primary image Cy 3 coupled) with low resistant strain (RS 122) (Secondary image coupled with Cy 5) using BVA module. All the combined results are displayed for **spot XIV**. **Panel A** shows the spot XIV in both the compared strains. **Panel B** represent graphical analysis for all three independent experiments, **Panel C** mean value of 3D expression of spot XIV in both the strains and **Panel D** shows statistical measurement.