

Supplementary Material

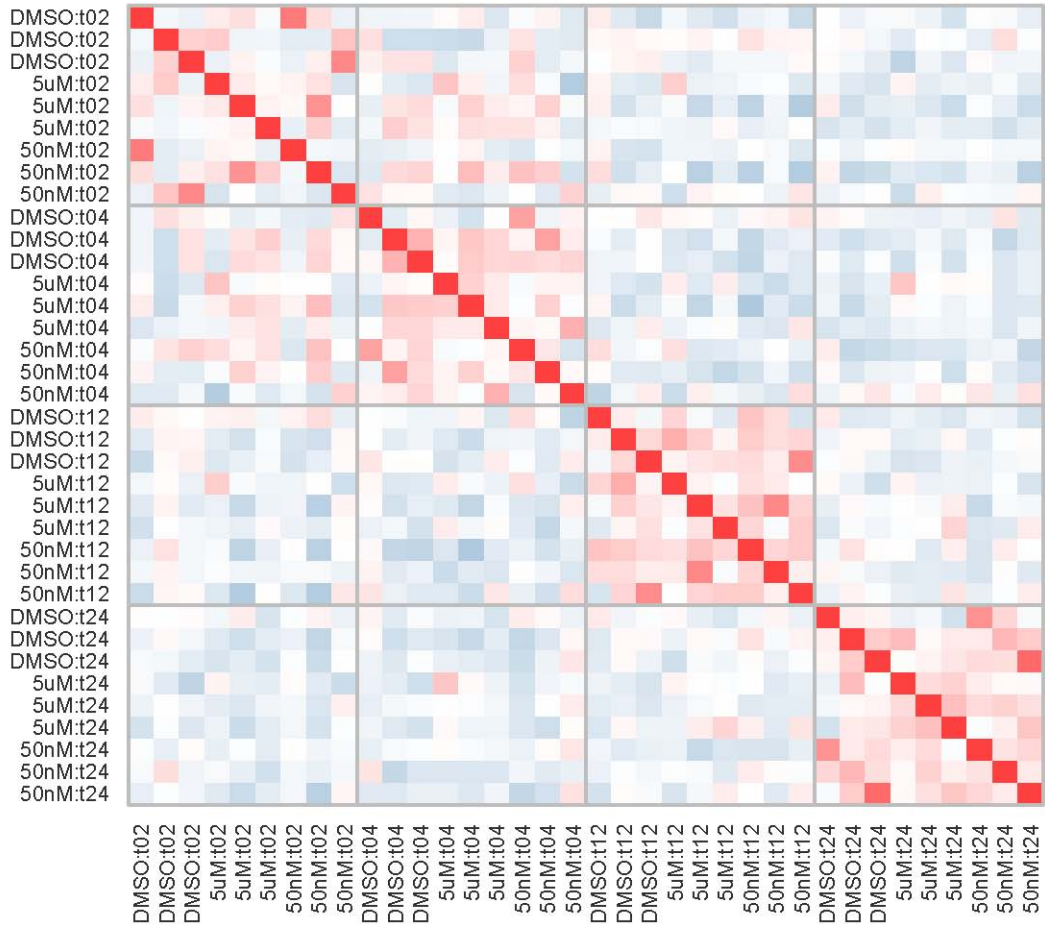
Supplementary Figures

1) The batch effect

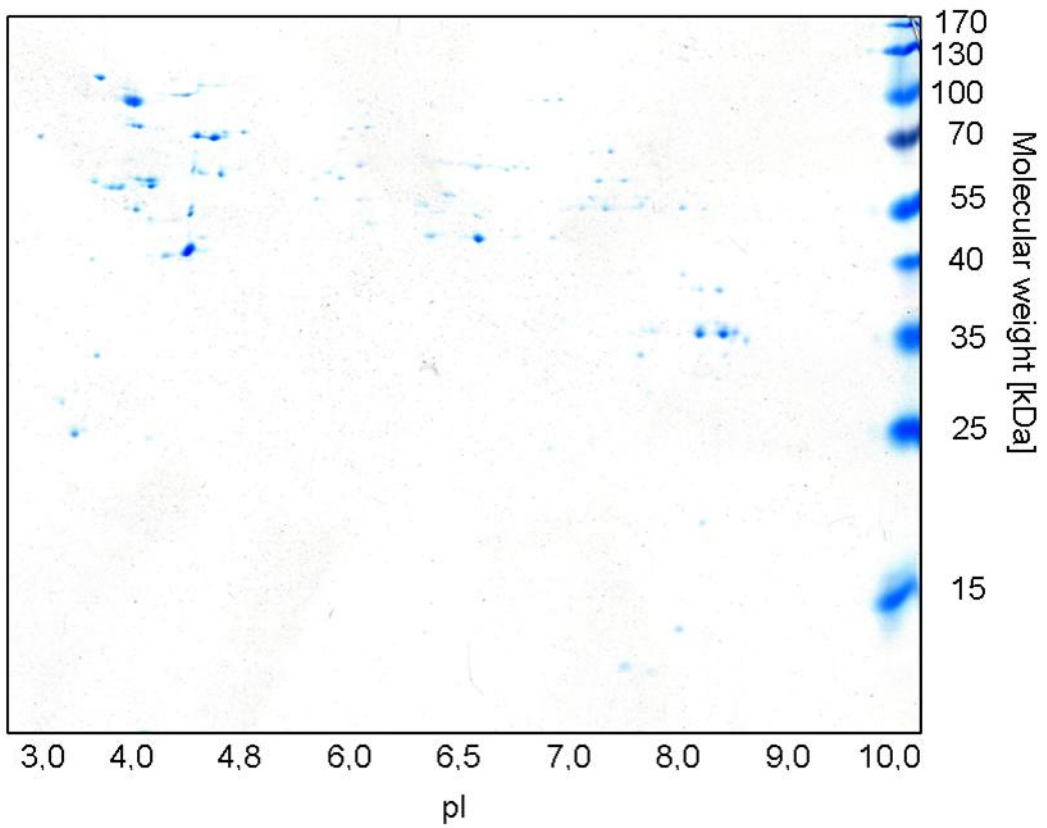
This correlation matrix of all 2-D DIGE gels shows that after the dye effect correction the ordering is according to time points (pink to red corresponds to high positive correlation).

2) 2-D DIGE gel post-stained with “blue silver” stain

Modified Neuhoff's colloidal Coomassie Blue G-250 stained DIGE-gel (loaded with 300 µg protein, 24 cm, pH range 3-10 NL) with the visible LabAid Page Ruler™ Prestained Protein ladder 10-170 kDa. Samples loaded on the gel were 48h incubation, 50 nM B[a]P (Cy3) and DMSO (Cy5), 1st replicate. As the protein amount loaded on the DIGE-gels is not sufficient for Coomassie-staining and the precise spot excision for the MS-based identification, Coomassie-stained mastergels with 2.0 and 2.5 mg of protein were required.



Supplementary Fig. 1



Supplementary Fig. 2